

# Exemplar Series # 1

## Interpretation of UPDM 1.0 SAR Diagrams in DoDAF 2.0 / DM2 Concepts

Extracts for DoD EA Conference May 2010

DoDAF Development Team



# Briefing Structure

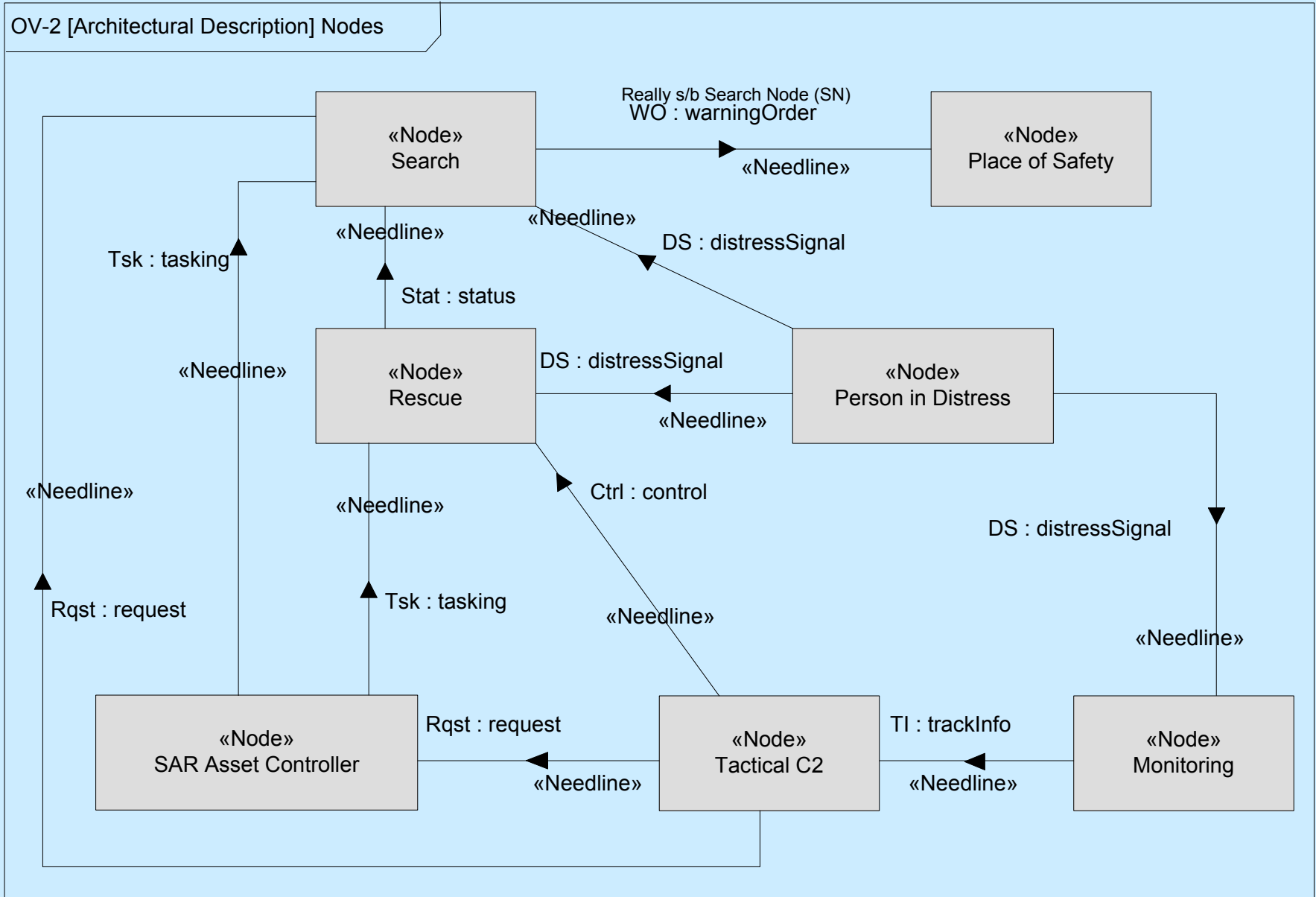


- The OMG UPDM Team developed examples of the views as part of UPDM 1.0. It is called “Sample Problem” and is Annex C in the UPDM 1.0 Spec.
  - The UPDM Team is working on a refinement of the Sample Problem for UPDM 2.0.
- The DoDAF 2 development team went through the examples and interpreted in DoDAF 2 / DM2 terms.
  - DM2 PES XML documents corresponding to each marked-up diagram are being posted on the DM2 collaboration site ([www.silverbulletinc.com/dm2](http://www.silverbulletinc.com/dm2))
- Briefing format
  1. A UPDM diagram will be shown first, in it’s native form from UPDM 1.0 Annex C. Blue background.
  2. Then DM2 annotated version of the same diagram will be shown. White background.

# UPDM SAR OV-2

## OV-2: Operational Connectivity Description

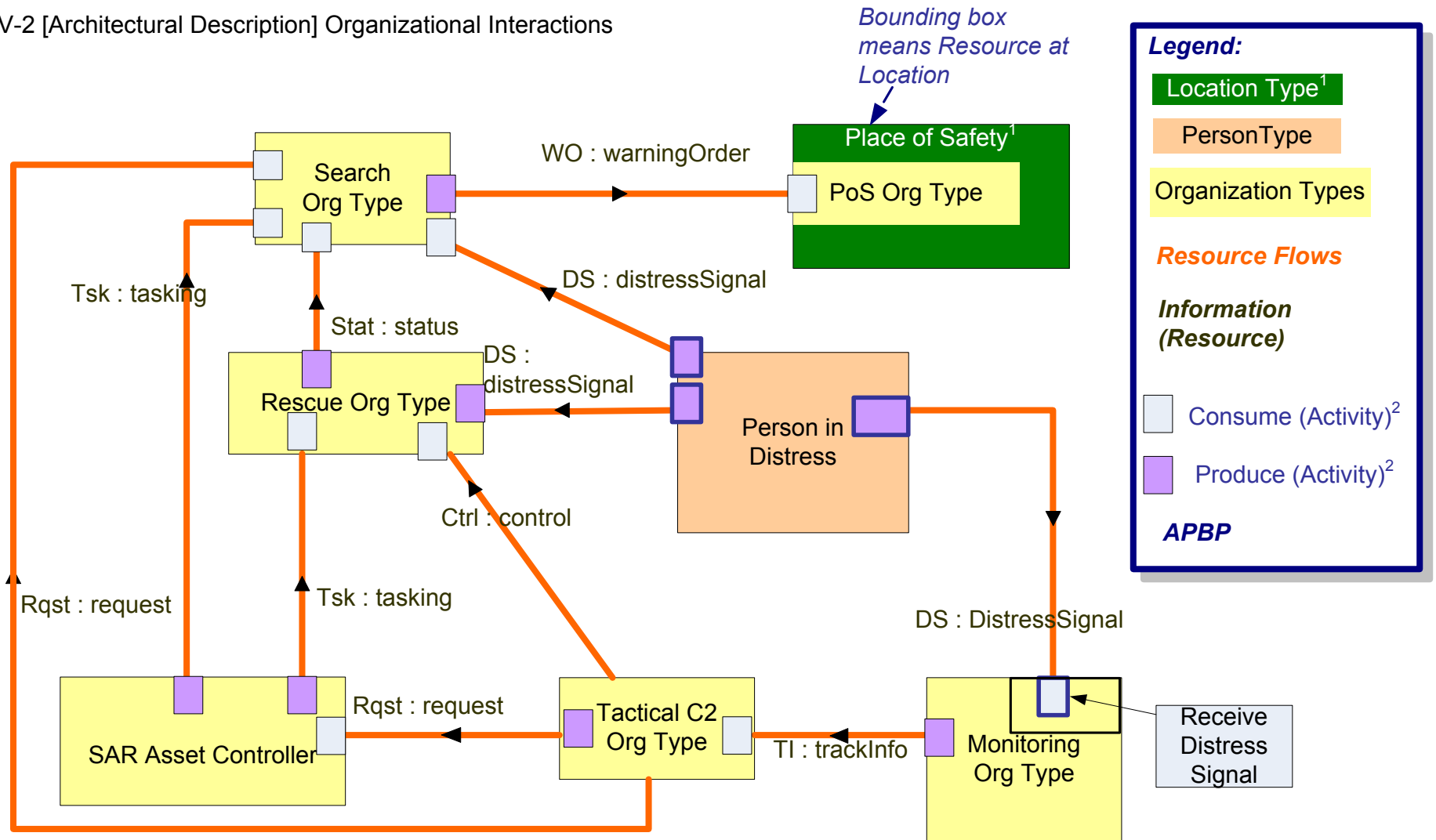
Operational connectivity and resource flow needlines



# OV-2 with DM2 Markups

<b>OV-2: Operational Connectivity Description</b>	Operational connectivity and resource flow needlines
---	--

OV-2 [Architectural Description] Organizational Interactions



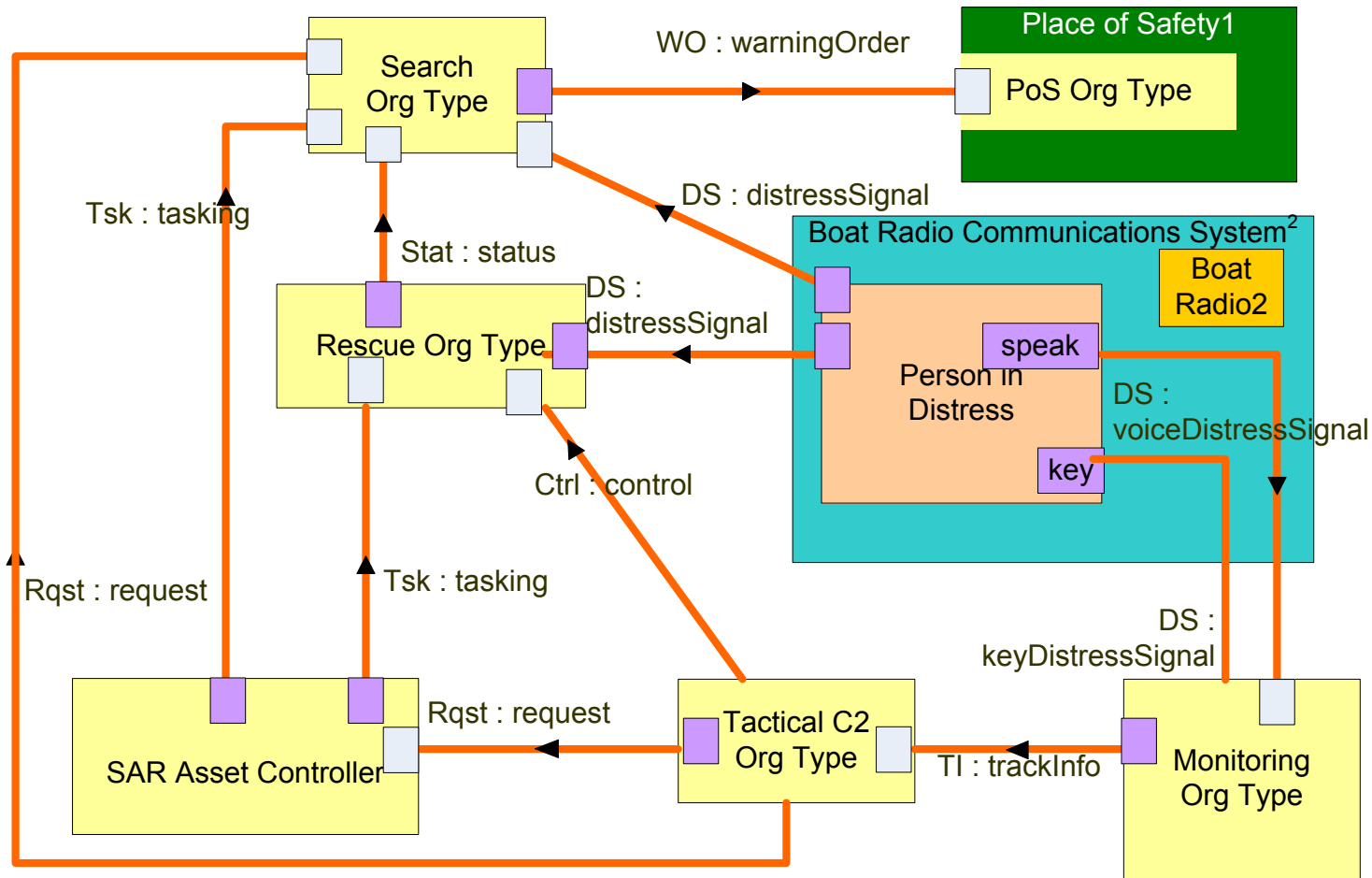
NOTE 1. Should generally not be shown in OV-2 unless an important constraint, i.e., not within the solution trade space.

NOTE 2: Implied. In DoDAF 2, "produce", "consume", "send", "receive" are Activities. An OV-2 diagram need not show the implied activities but the DM2 PES XML document must, even if they are just placeholders to be completed later, e.g., during OV-5 development. This precision solves the "overspecification" problem of earlier DoDAF OV's.

# Fit-for-Purpose OV-2 with SV-1 Composite

OV-2 [Architectural Description] Organizational Interactions

*Bounding box means Resource at Location*



**Legend:**

- Location Type<sup>1</sup> (green box)
- PersonType (orange box)
- Organization Types (yellow box)

**Resource Flows**

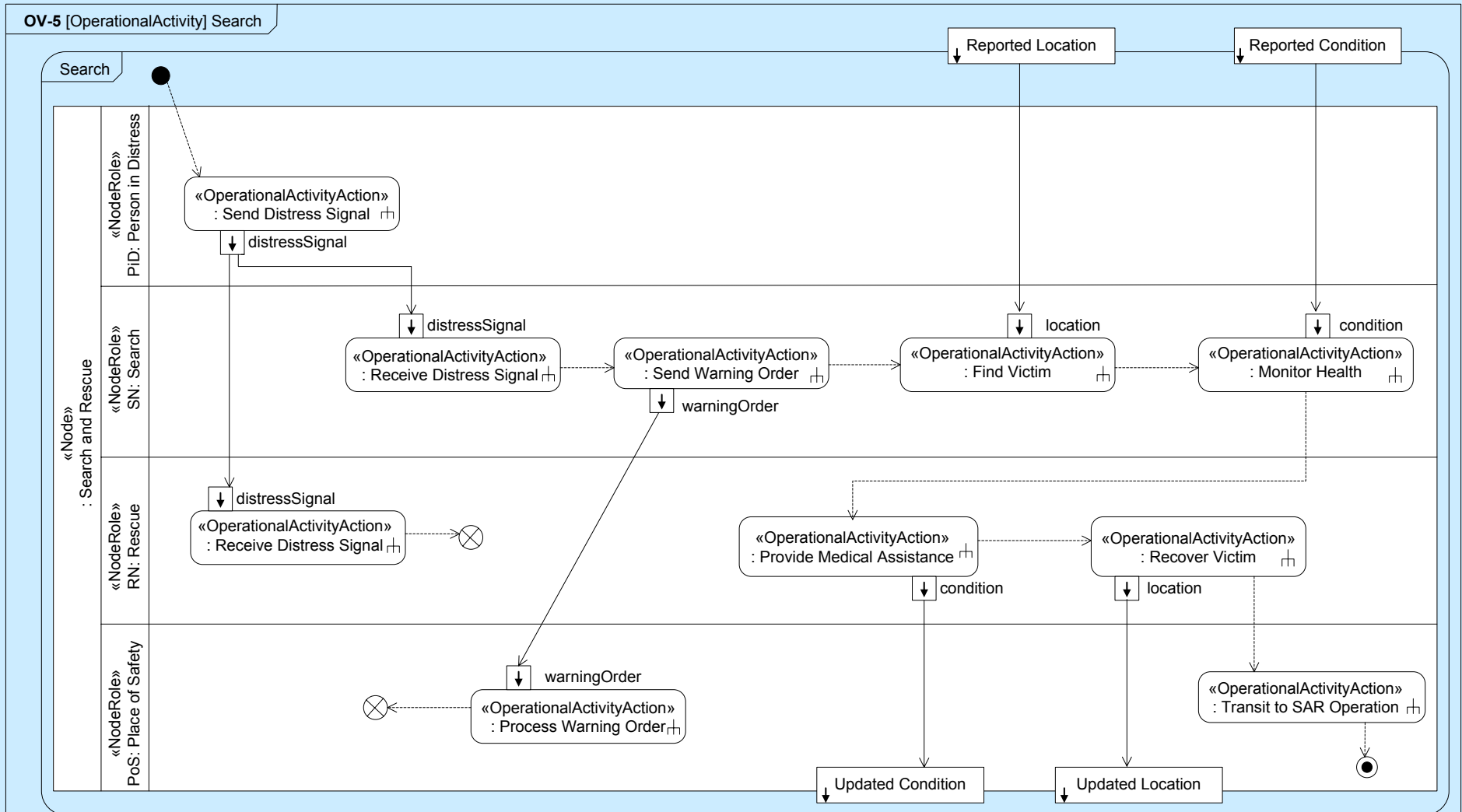
Information (Resource)

- Consume (Activity) (light blue square)
- Produce (Activity) (light purple square)
- System (cyan box)
- Materiel (yellow box)

# UPDM SAR OV-5

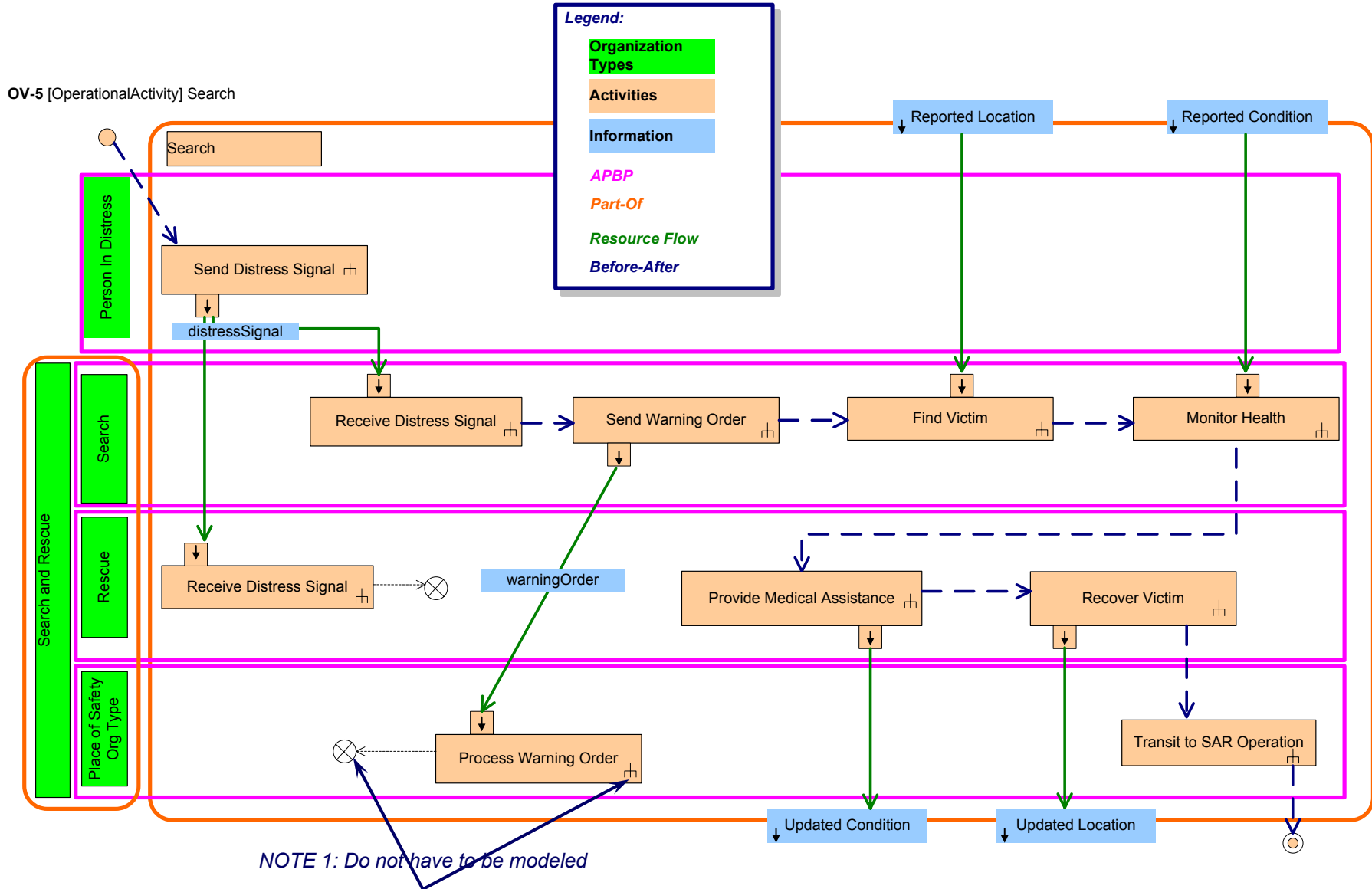
## OV-5b: Activity Model

Capabilities, activities (operational activities), relationships among activities, inputs, and outputs; overlays can show cost, performers or other pertinent information



# FFP OV-5b/6c Hybrid

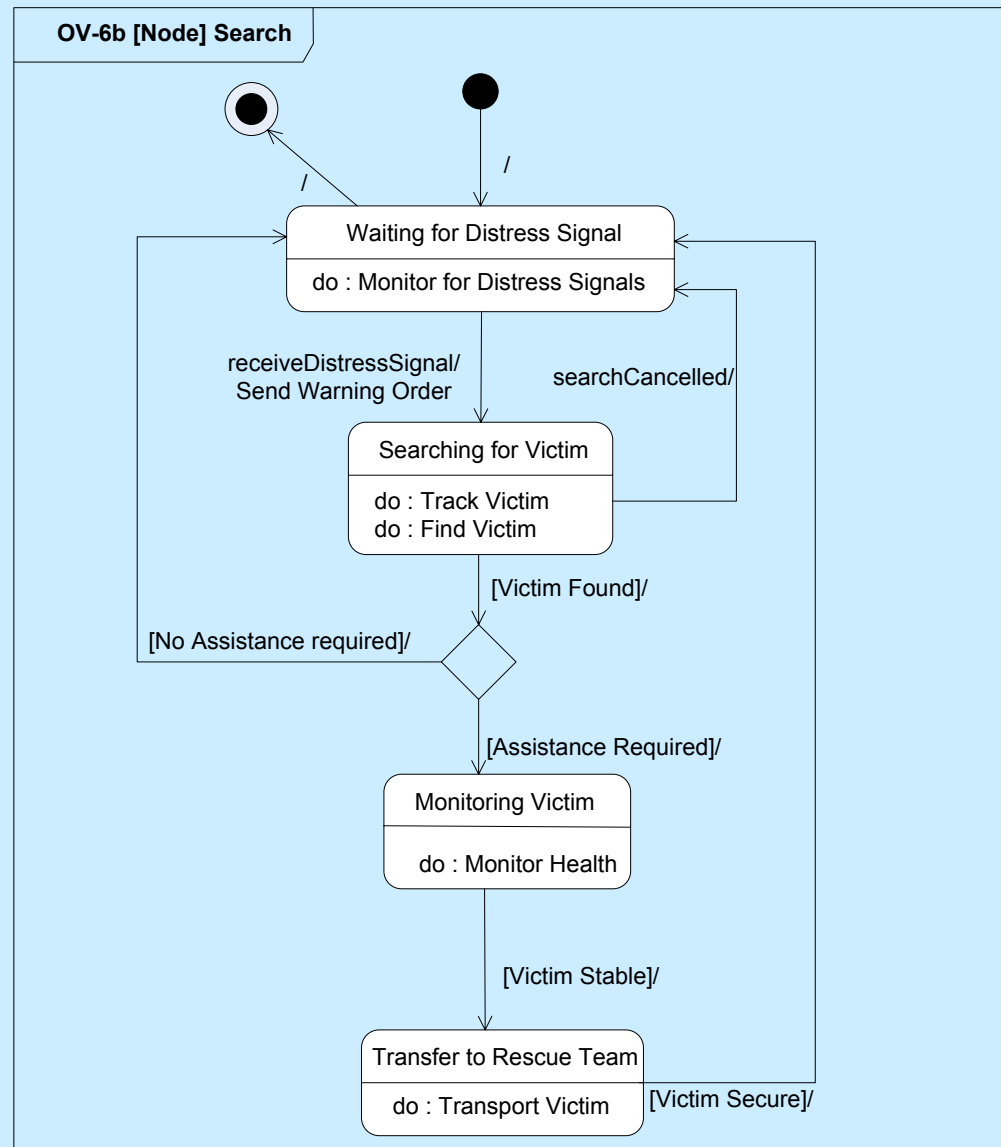
<b>OV-5b: Activity Model</b>	Capabilities, activities (operational activities), relationships among activities, inputs, and outputs; overlays can show cost, performers or
<b>OV-6c: Event-Trace Description</b>	One of three models used to describe activity (operational activity) - traces actions in a scenario or sequence of events



# UPDM SAR OV-6b

## OV-6b: State Transition Description

One of three models used to describe activity (operational activity) - identifies business process responses to events



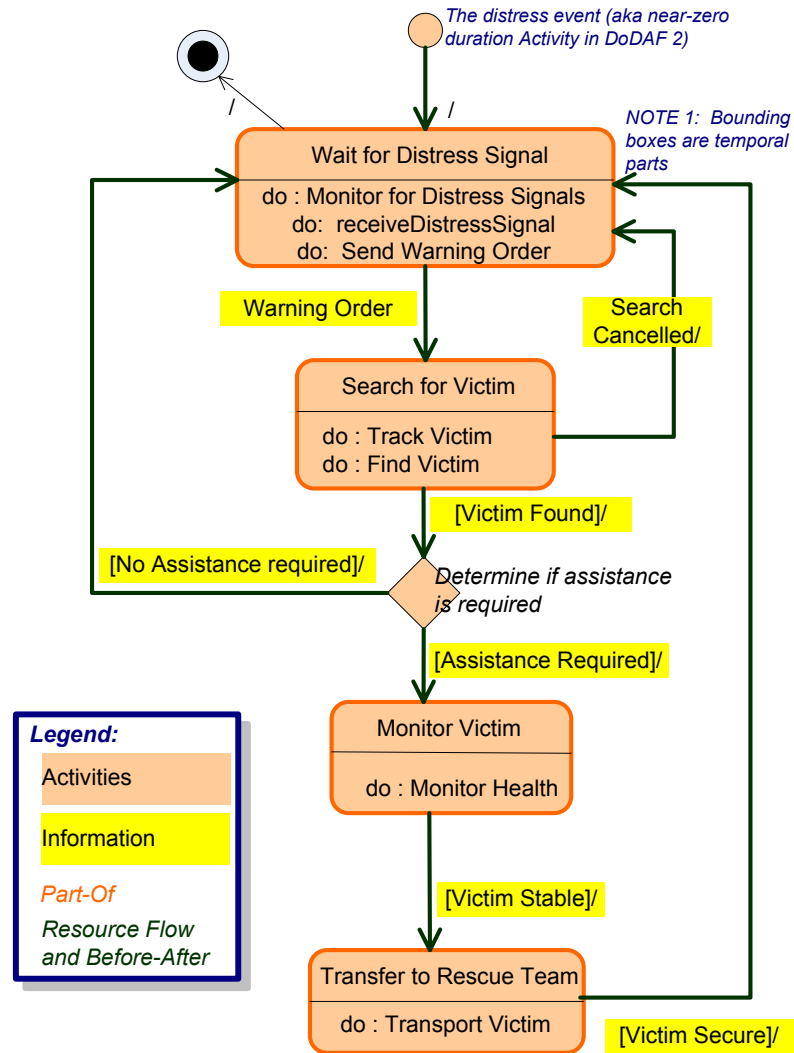


# OV-6b with DM2 Markups

## OV-6b: State Transition Description

One of three models used to describe activity (operational activity) - identifies business process responses to events

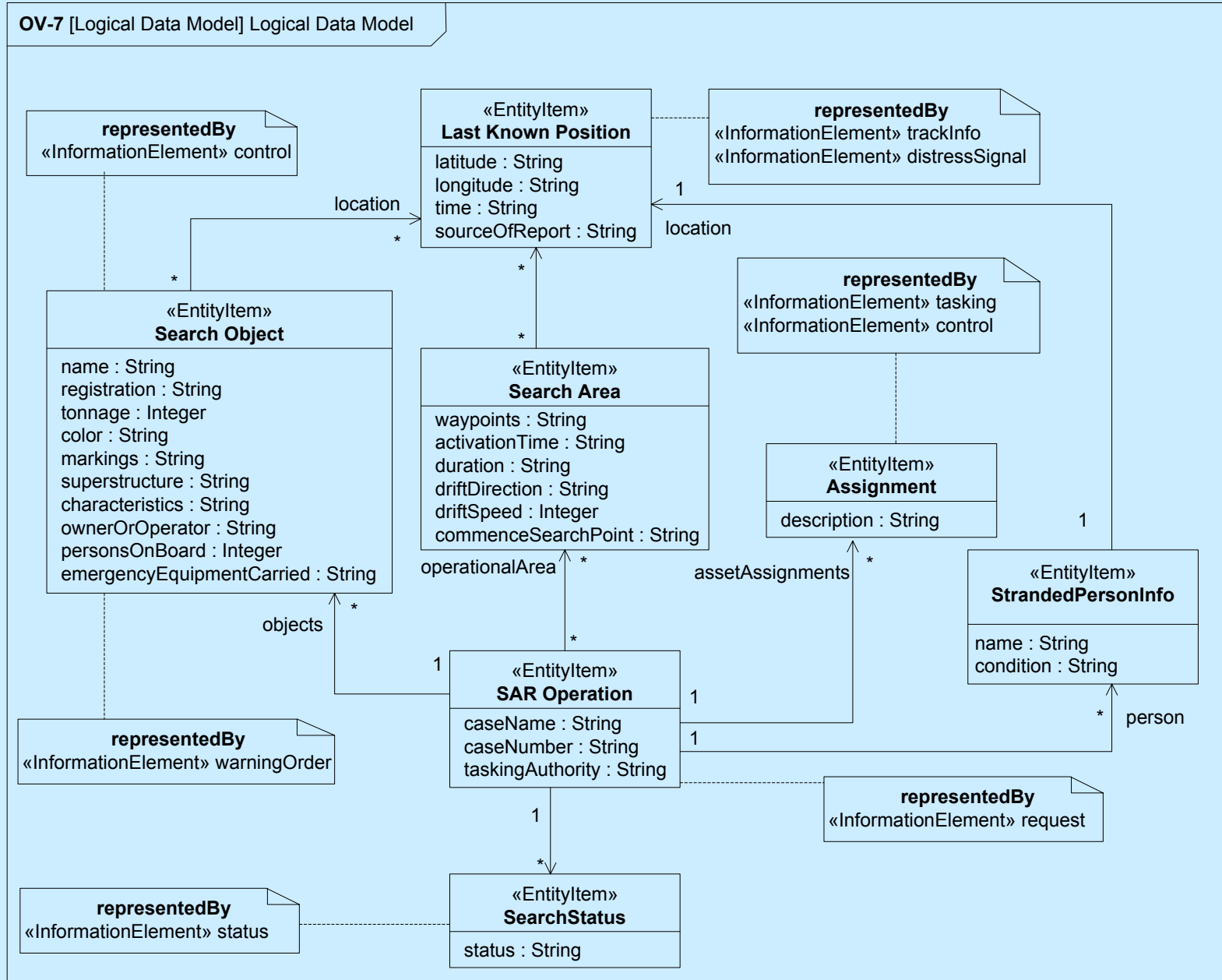
OV-6b Search



# UPDM SAR DIV-2

## DIV-2: Logical Data Model

Documentation of the data requirements and structural business process rules (In DoDAF V1.5, this was the OV-7)

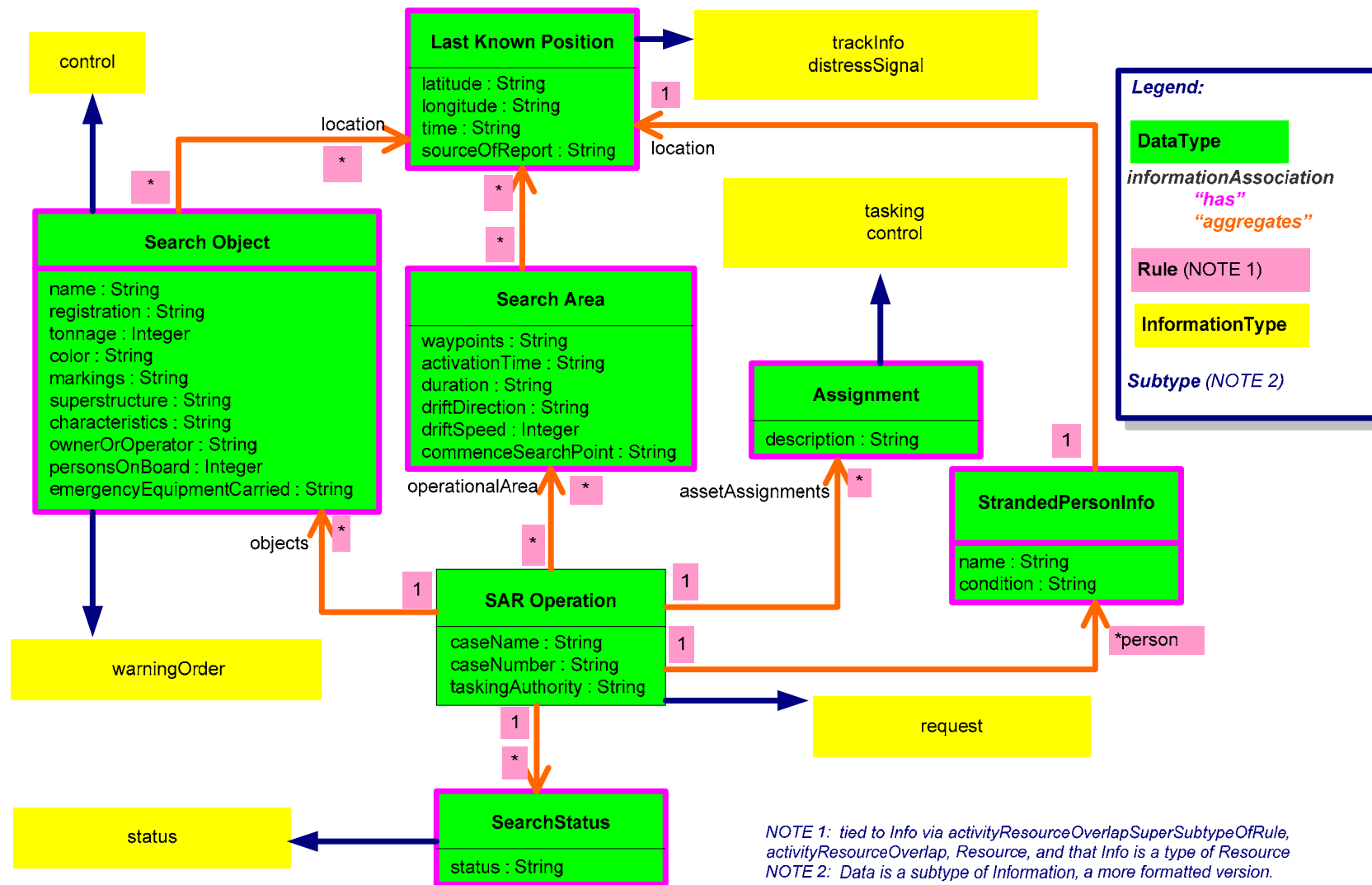


# DIV-2 with DM2 Markups

## DIV-2: Logical Data Model

Documentation of the data requirements and structural business process rules (In DoDAF V1.5, this was the OV-7)

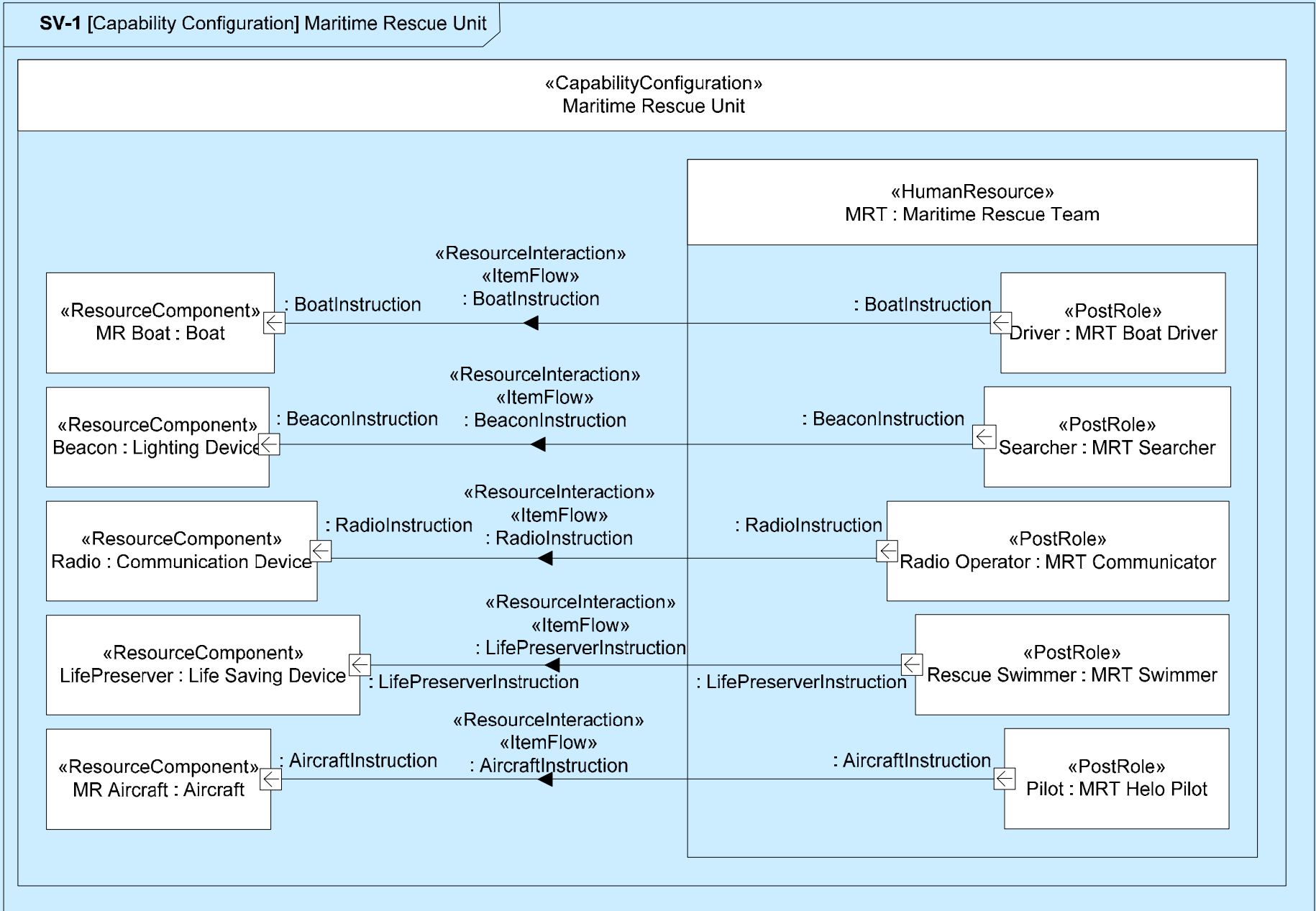
DIV-2 [Logical Data Model] Logical Data Model



# UPDM SAR SV-1

## SV-1 Systems Interface Description

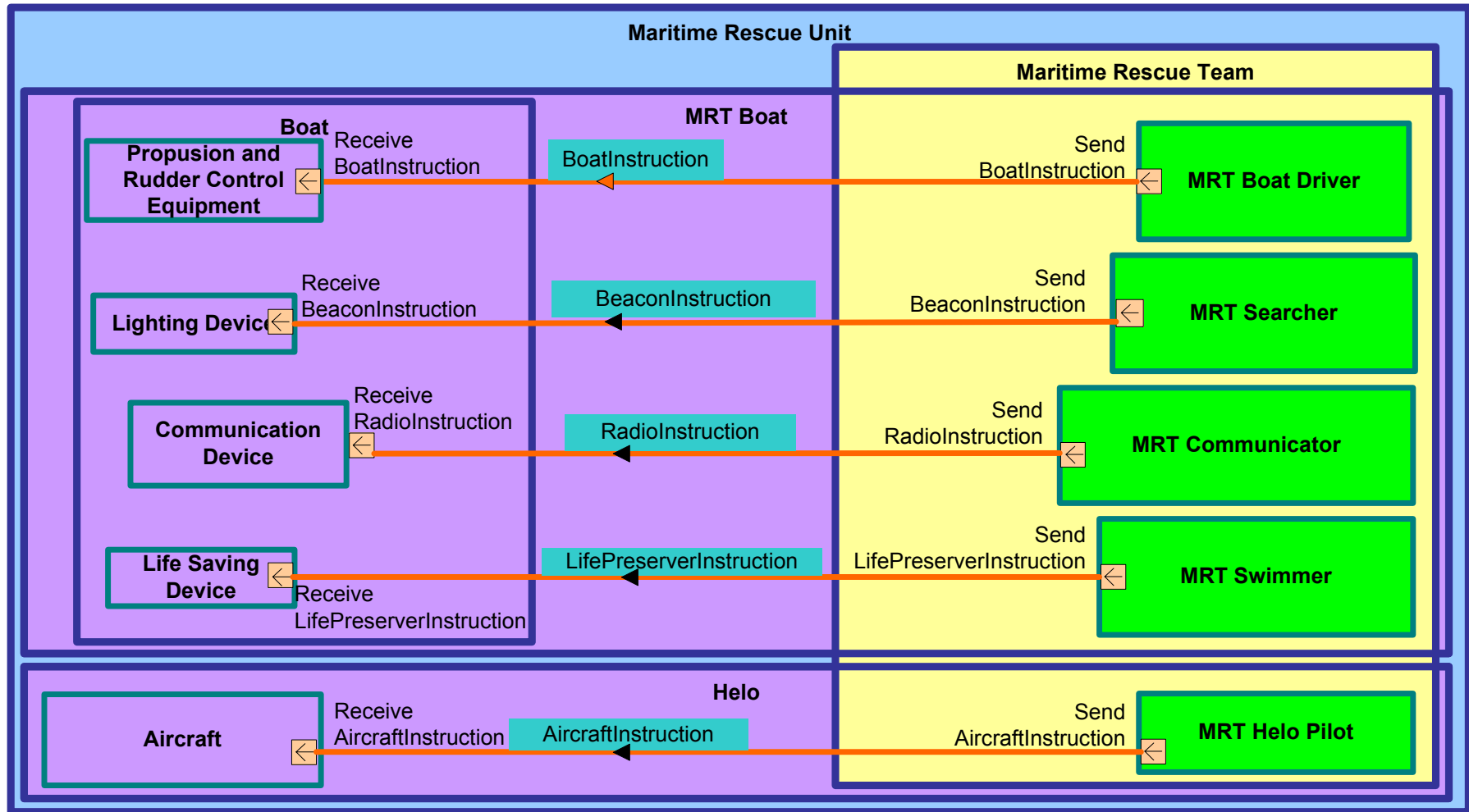
Identification of systems and system items and their interconnections



# SV-1 with DM2 Markups

<b>SV-1 Systems Interface Description</b>	Identification of systems and system items and their interconnections
---	---

SV-1 [Performer] Maritime Rescue Unit



**Legend:**

Systems	Information	ResourceFlow
Activities	PersonType	Whole - Part
Performer	Organization Type	APBP

# UPDM SAR SV-7

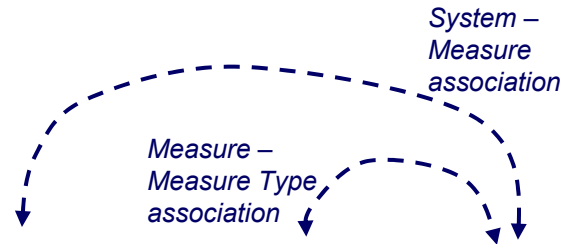
## SV-7 Systems Performance Parameters Matrix

Performance characteristics of Systems Model elements for the appropriate time frame(s)

Parameter ID	System/Element	Performance Requirement	Metric	Measure
<b>Hardware</b>				
H 1.1	Voice Radio Transmitter	Transmission rate	2	GB
H 2.1	Voice Radio Receiver	Gain	60	dB
H 2.2		Signal to Noise Ratio	20	dB
H 3.1	Signal Processor	Comms Channel Bandwidth Support	2	GB
<b>Software</b>				
S 1.2	Status Alerting	Min. status change alert accuracy	500	meters
S 1.3		Min. alert response time	30	seconds

# SV-7 with DM2 Markups

<b>SV-7 Systems Performance Parameters Matrix</b>	Performance characteristics of Systems Model elements for the appropriate time frame(s)
---	---



**Legend:**

- Measure Types
- Measure Type units
- Measures
- Systems
- Materiel (type)<sup>1</sup>

System - Measure Type - Measure association Name <sup>3</sup>	System	Measure Type	Measure	Measure Type units
				Hardware <sup>1</sup>
H 1.1	Voice Radio Transmitter	Transmission rate	2	GB
H 2.1	Voice Radio Receiver	Gain	60	dB
H 2.2		Signal to Noise Ratio	20	dB
H 3.1	Signal Processor	Comms Channel Bandwidth Support	2	GB
				Software <sup>1</sup>
S 1.2	Status Alerting (component)	Min. status change alert accuracy	500	meters
S 1.3		Min. alert response time	30	seconds

Header means Systems below principally consist of this Materiel type

NOTE 1: Not generally shown in SV-7

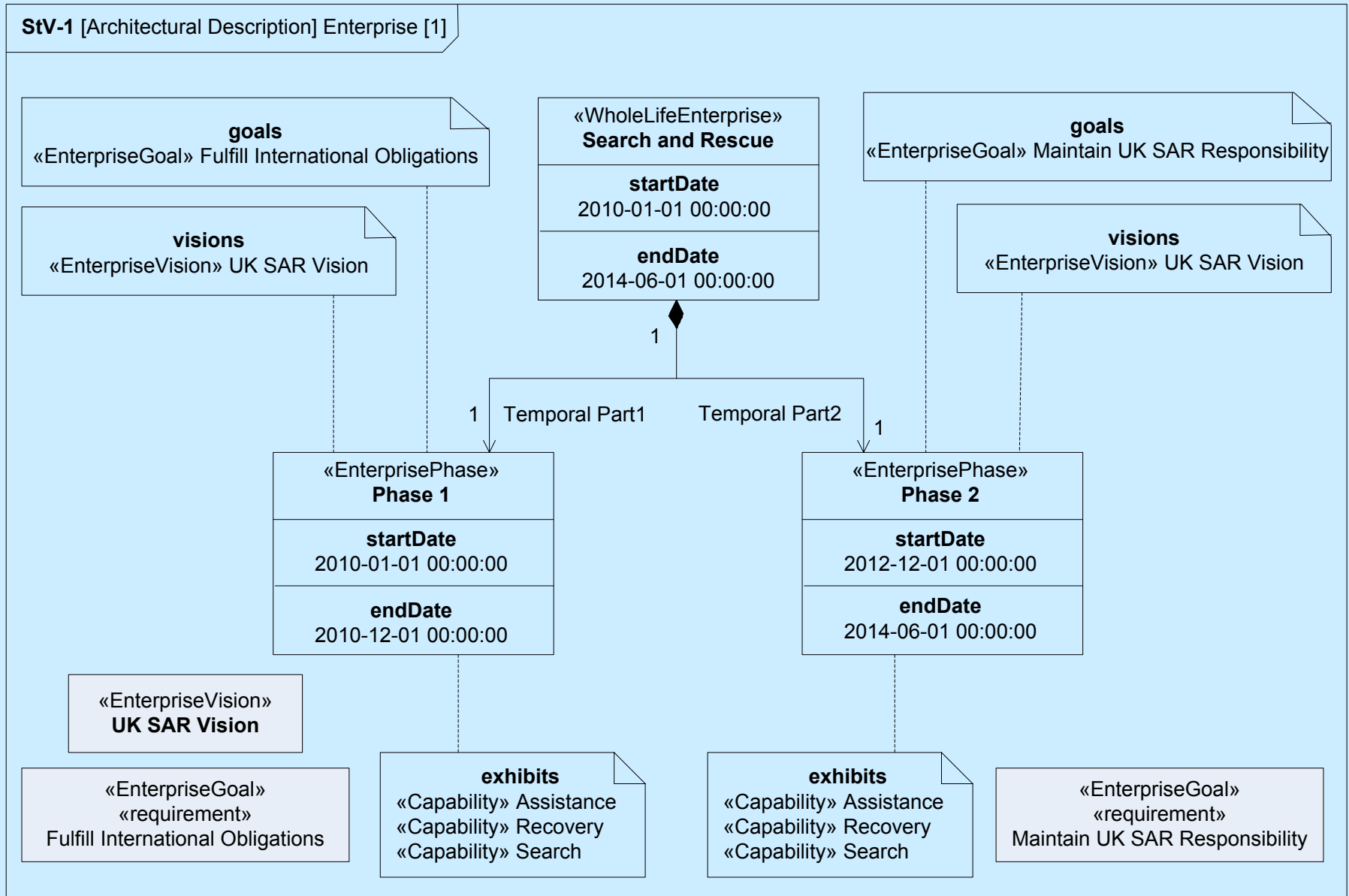
NOTE 2: Often it is necessary to relate the Activity (aka System Function) to which the metric applies within the System. Many, often most, System metrics relate to some Activity performed by the System.

NOTE 3: Not necessary.

# UPDM SAR CV-1

## CV-1: Vision

Overall vision for transformational endeavors, provides a strategic context for the capabilities described, and provides a high-level scope.

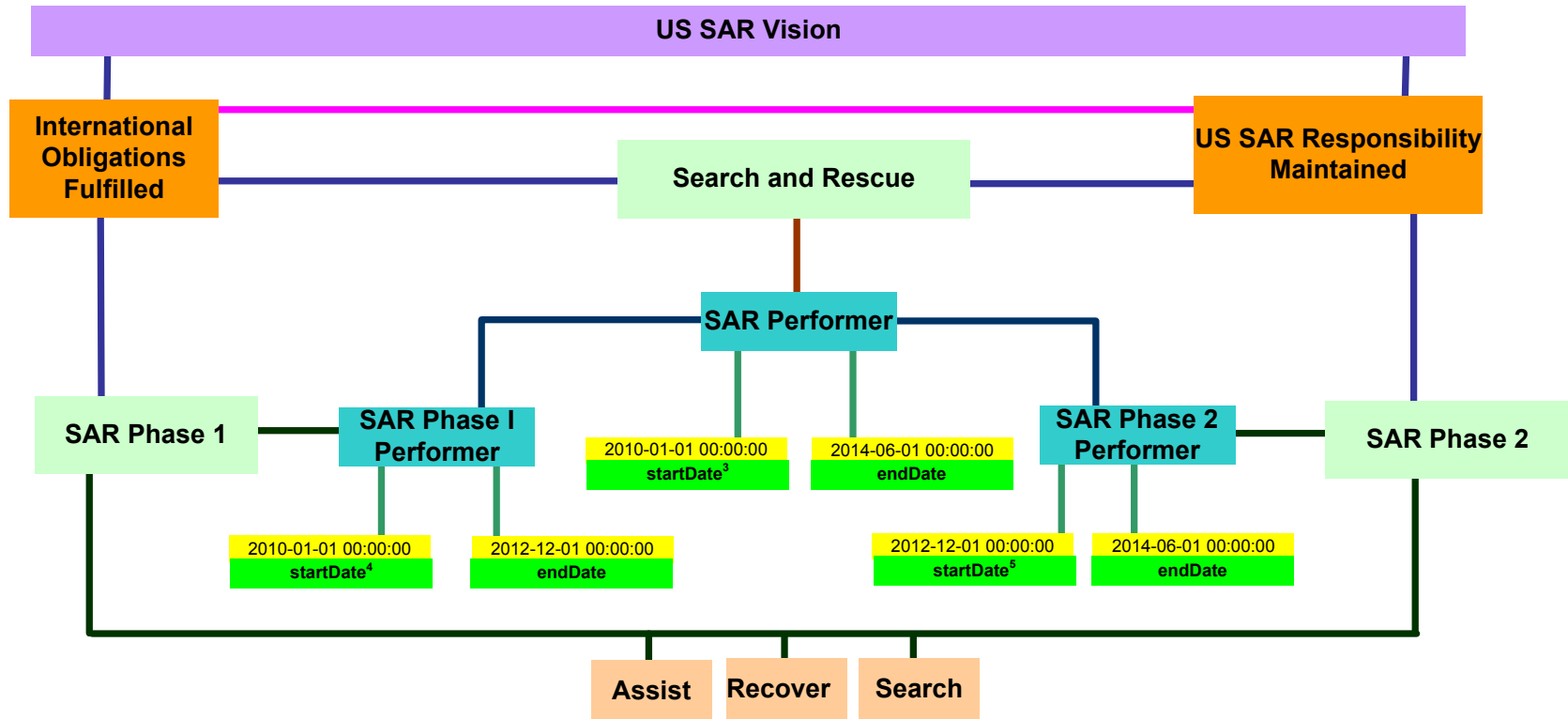




# Partial<sup>1</sup> CV-1 with DM2 Markups

**CV-1: Vision** Overall vision for transformational endeavors, provides a strategic context for the capabilities described, and provides a high-level scope.

CV-1 SAR Vision



**Legend:**

Visions	Measures	Temporal Whole Part
Capabilities	MeasureTypes	Measure of Temporal boundary
Resource <sup>6</sup>	Activities part of Capability	Capability of Performer
Activities	Whole Part	Desired Effects
Performer <sup>2</sup>		

NOTE 1: "Partial" because any CV should contain the structural description of the Capabilities, in terms of Desired Effects and associated measures, Activities to be performed under conditions – and associated measures.

NOTE 2: Performer is probably an aggregate (whole-parts), aka "Capability Configuration"

NOTE 3: Whole Capability lasts 54 months

NOTE 4: Phase I lasts 35 months

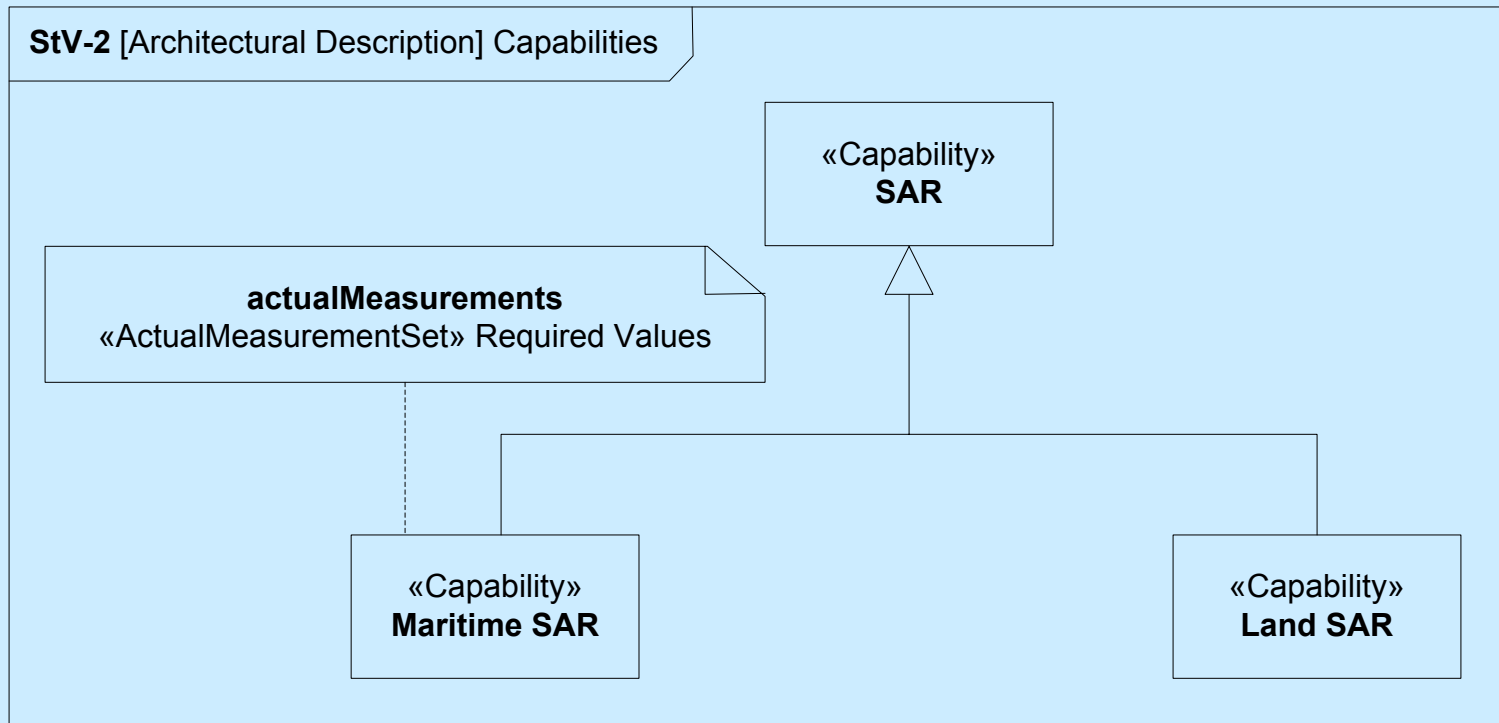
NOTE 5: Phase II lasts 19 months

NOTE 6: Desired effects are states of Resources

# UPDM SAR CV-2

## CV-2: Capability Taxonomy

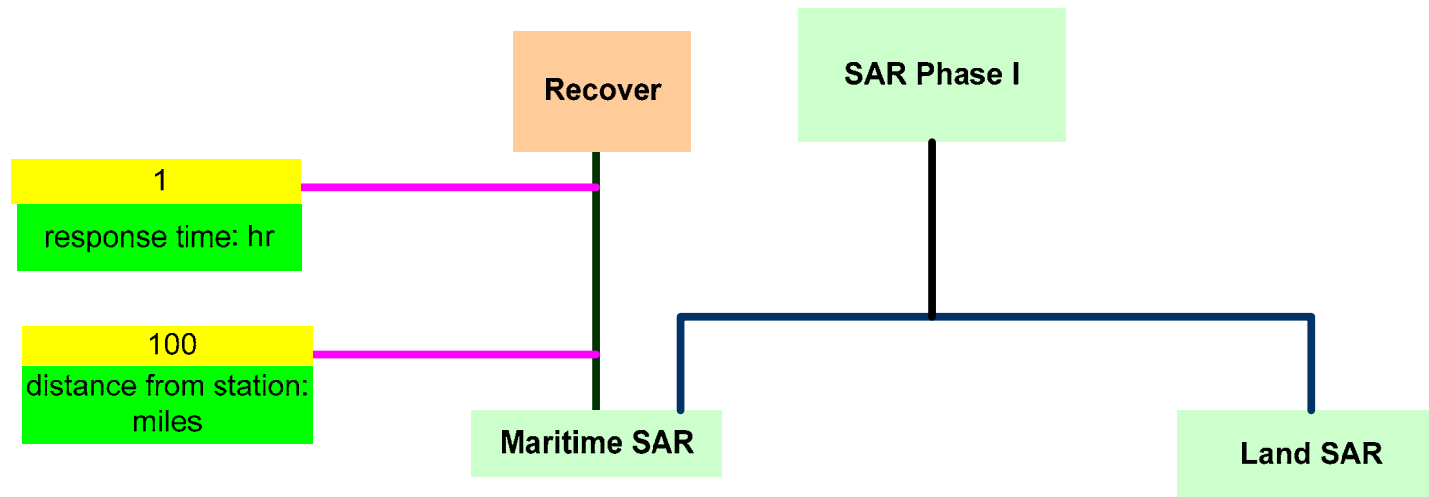
A hierarchy of capabilities, specifies all the capabilities that are referenced throughout one or more architectures.



# Partial<sup>1</sup> CV-2 with DM2 Markups

<b>CV-2: Capability Taxonomy</b>	A hierarchy of capabilities, specifies all the capabilities that are referenced throughout one or more architectures.
----------------------------------	---

CV-2 SAR Capabilities



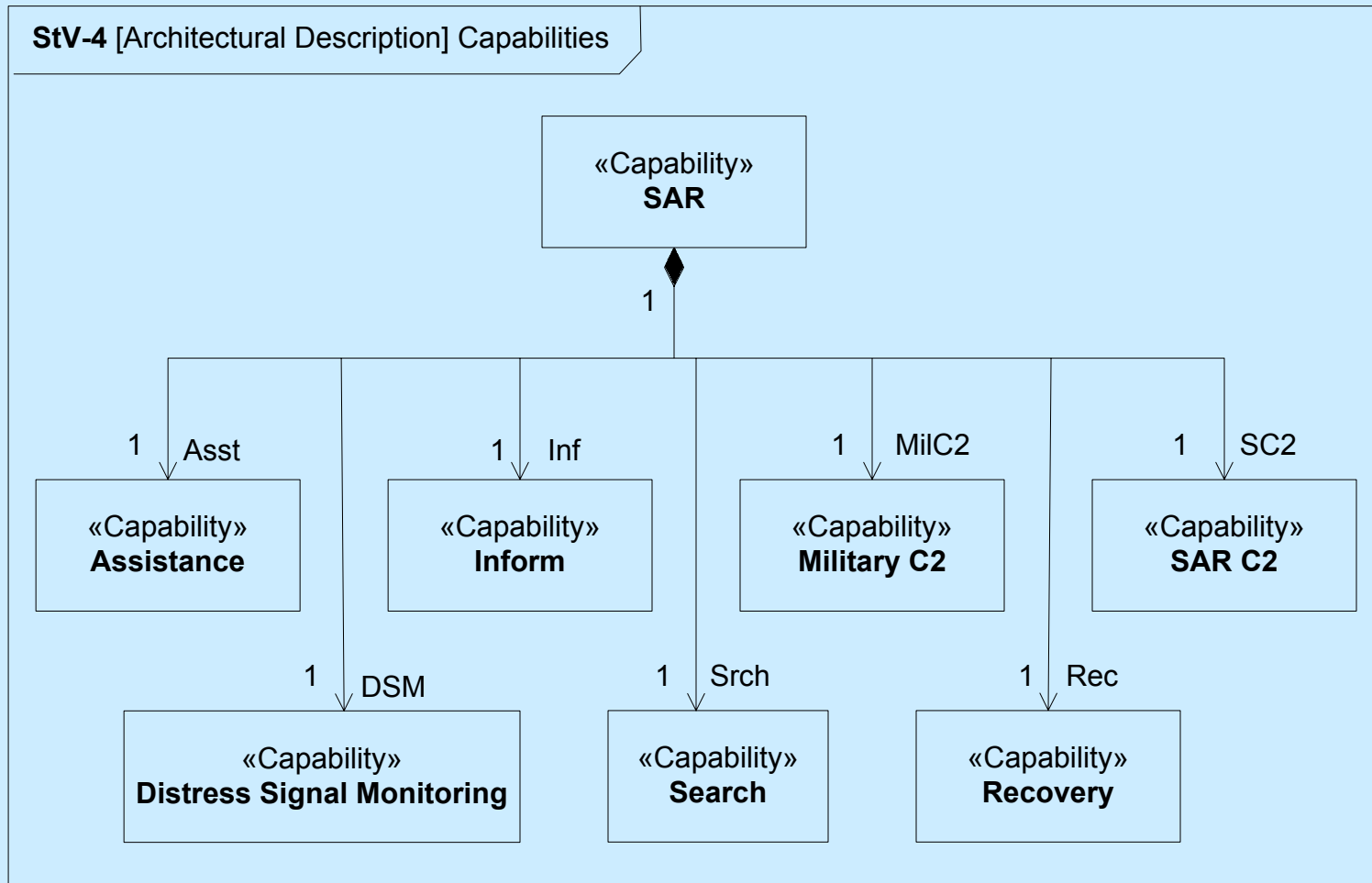
<b>Legend:</b>		
Capabilities	Measures	Super subtype
Activities	MeasureTypes	Measure of Activity part of Capability
	Activities part of Capability	

NOTE 1: "Partial" because any CV should contain the structural description of the Capabilities, in terms of Desired Effects and associated measures, Activities to be performed under conditions – and associated measures.

# UPDM SAR CV-4

## CV-4: Capability Dependencies

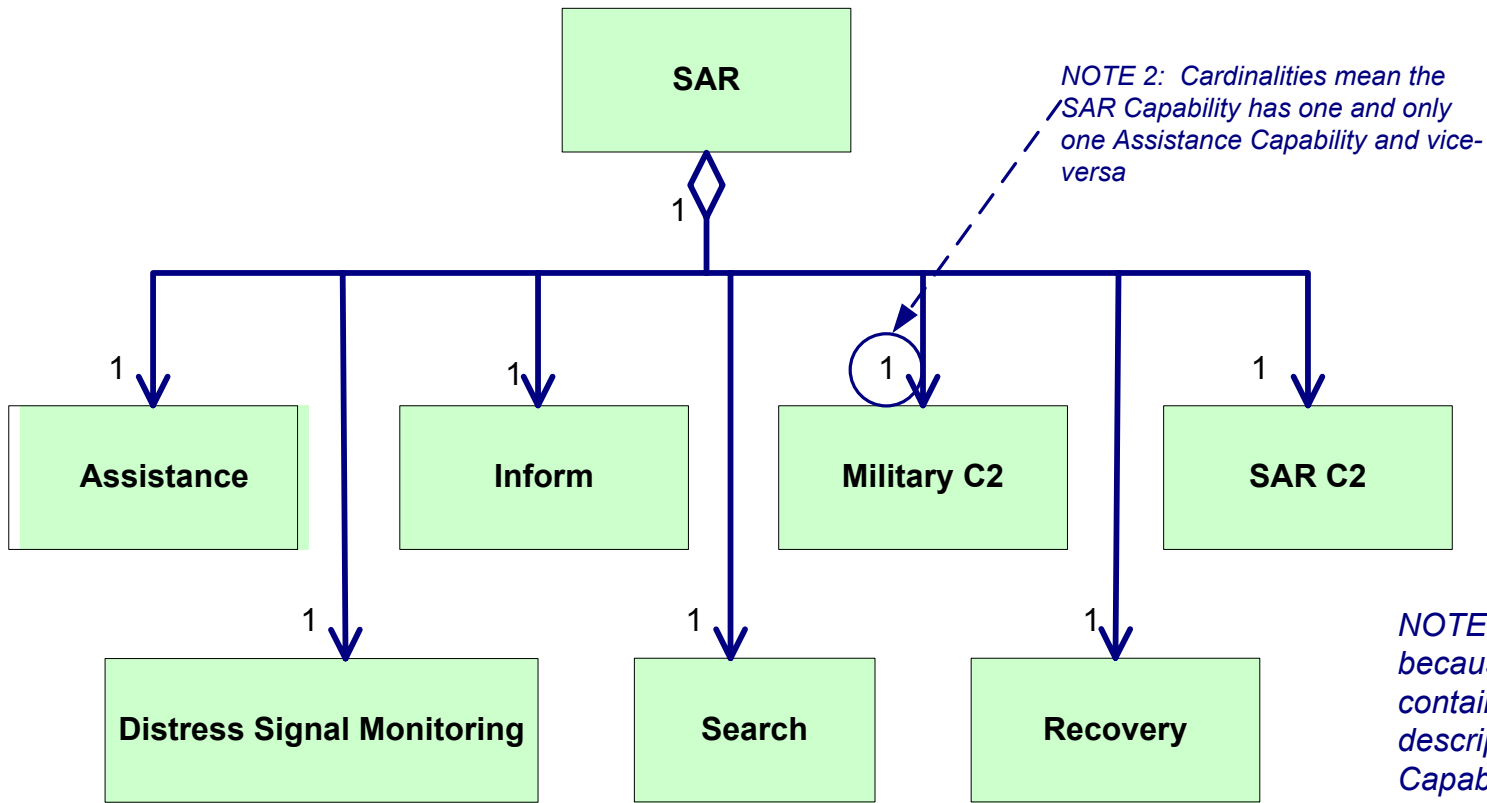
Dependencies between planned capabilities and defines logical groupings of capabilities.



# Partial<sup>1</sup> CV-2 with DM2 Markups

<b>CV-2: Capability Taxonomy</b>	A hierarchy of capabilities, specifies all the capabilities that are referenced throughout one or more architectures.
----------------------------------	---

## CV-2 [Architectural Description] Capabilities



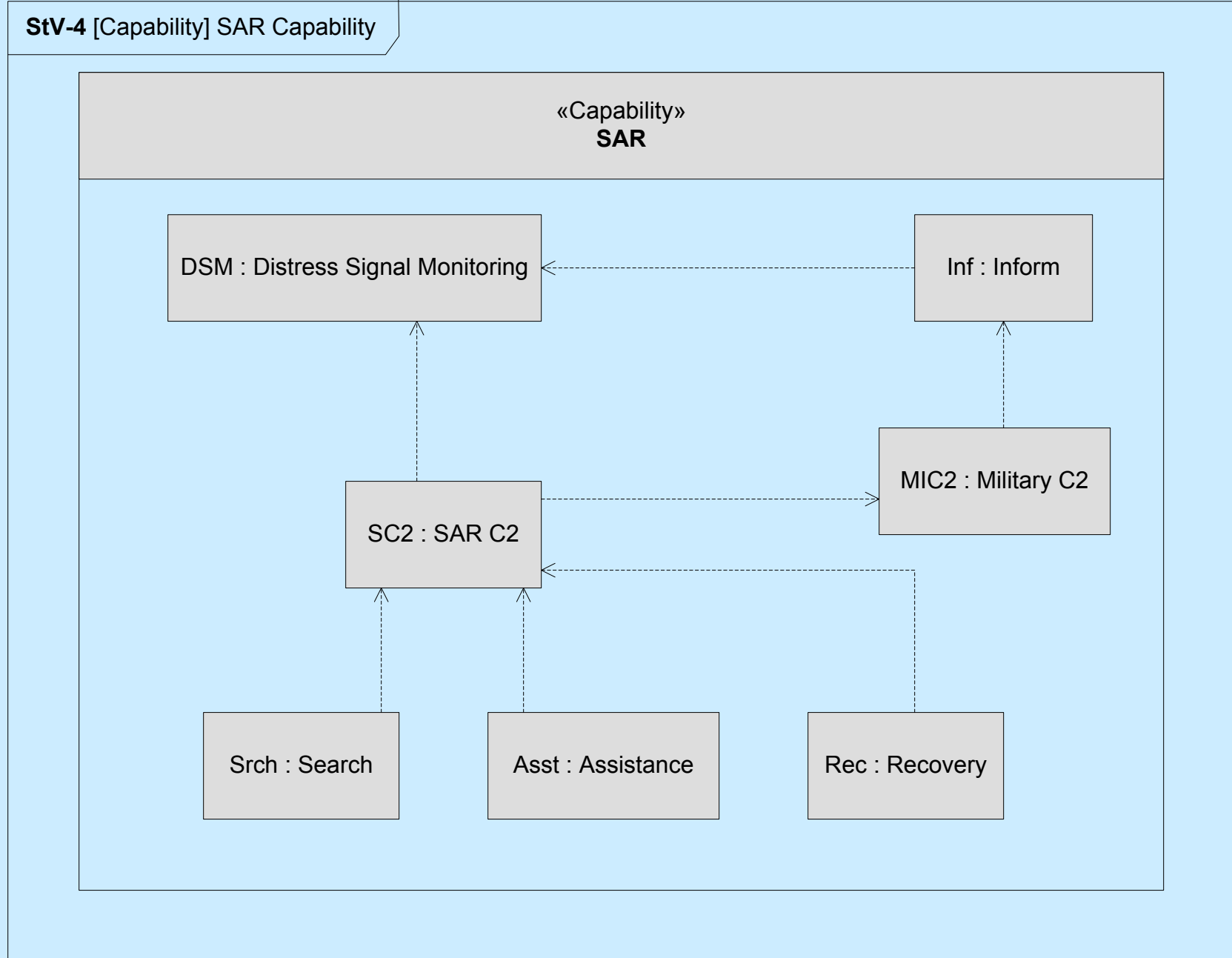
NOTE 1: "Partial" because any CV should contain the structural description of the Capabilities, in terms of Desired Effects and associated measures, Activities to be performed under conditions – and associated measures.

<b>Legend:</b>	<b>Whole-part with cardinalities (NOTE 2)</b>
Capabilities	

# UPDM SAR CV-4

## CV-4: Capability Dependencies

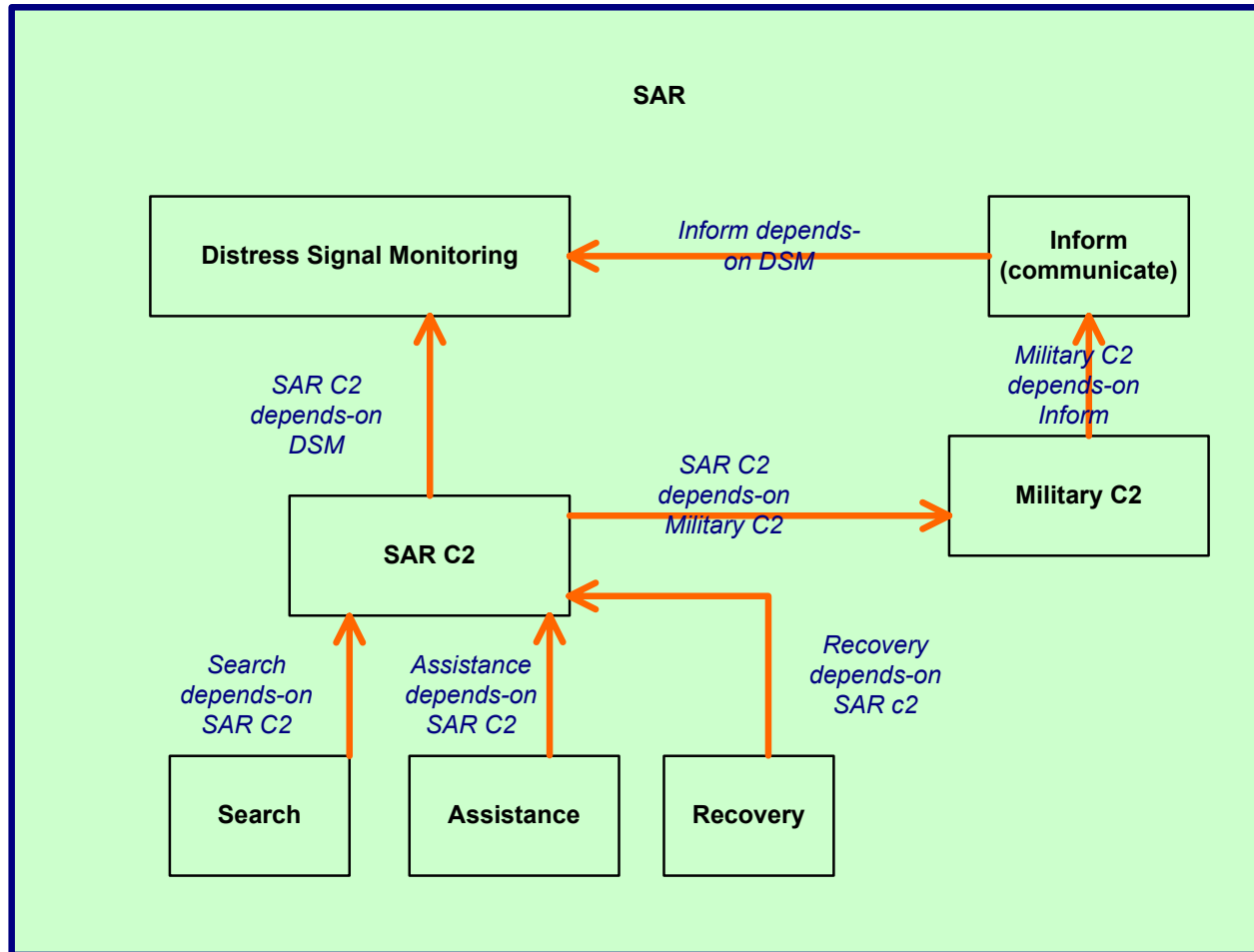
Dependencies between planned capabilities and defines logical groupings of capabilities.



# Partial<sup>1</sup> CV-4 with DM2 Markups

<b>CV-4: Capability Dependencies</b>	Dependencies between planned capabilities and defines logical groupings of capabilities.
--------------------------------------	--

CV-4 [Capability] SAR Capability



<b>Legend:</b>	
Capabilities	Whole-part (NOTE 2)
Desired Effect	Whole-part (NOTE 3)

NOTE 1: "Partial" because any CV should contain the structural description of the Capabilities, in terms of Desired Effects and associated measures, Activities to be performed under conditions – and associated measures.  
 NOTE 2: Bounding box shows DSM, SC2, Inf, MIC2, Srch, Asst, Rec are "grouped under" (part-of or overlap-with) SAR  
 NOTE 3: Means, the desired effect of the "whole" capability includes the desired effects of the "parts".

# UPDM SAR CV-5

## CV-5: Capability to Organizational Development Mapping

The fulfillment of capability requirements, shows the planned capability deployment and interconnection for a particular Capability Phase.

[Architectural Description] Capabilities [StV-5]

### Capabilities

**Organizational Resources**

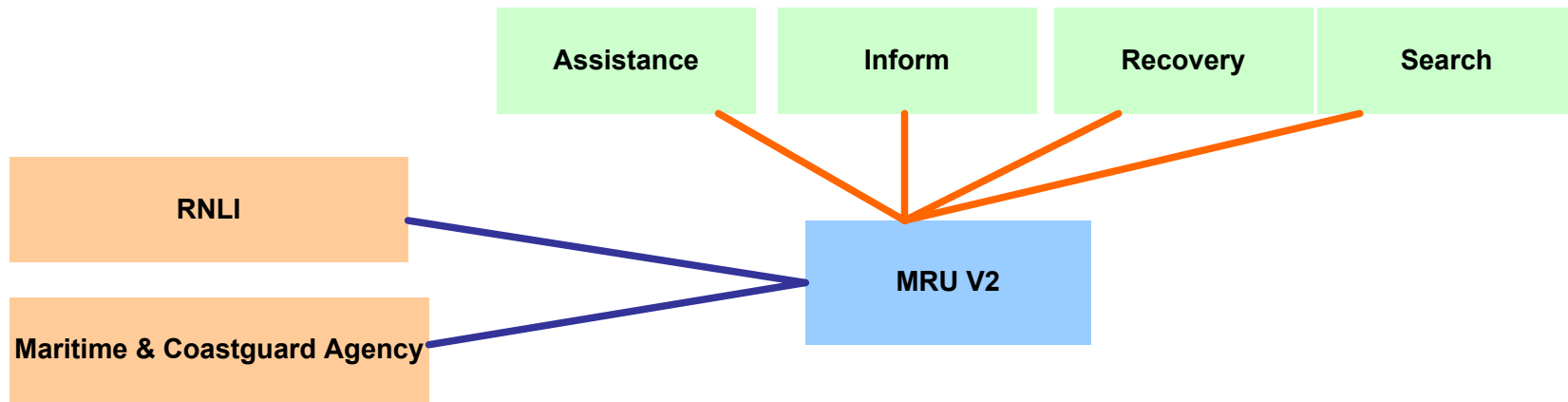
	«Capability» Assistance	«Capability» Inform	«Capability» Recovery	«Capability» Search
«ActualOrganization» RNLI	Maritime Rescue Unit Maritime Rescue Unit V2	Maritime Rescue Unit Maritime Rescue Unit V2	Maritime Rescue Unit Maritime Rescue Unit V2	Maritime Rescue Unit Maritime Rescue Unit V2
«ActualOrganization» Maritime & Coastguard Agency	Maritime Rescue Unit Maritime Rescue Unit V2	Maritime Rescue Unit Maritime Rescue Unit V2	Maritime Rescue Unit Maritime Rescue Unit V2	Maritime Rescue Unit Maritime Rescue Unit V2



# Partial<sup>1</sup> CV-5 with DM2 Markups

<b>CV-5: Capability to Organizational Development Mapping</b>	The fulfillment of capability requirements, shows the planned capability deployment and interconnection for a particular Capability Phase.
---	--

[Architectural Description] Capabilities [CV-5]



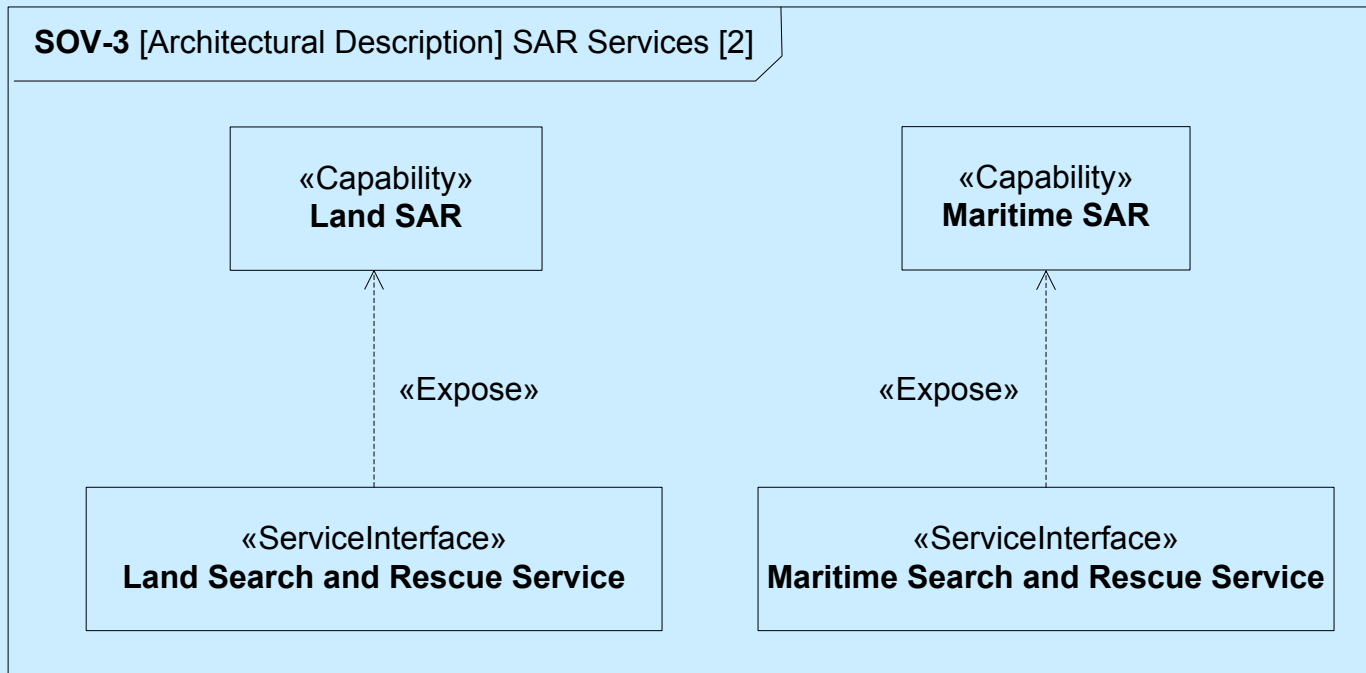
**Legend:**

Capabilities	<i>Performer that enables / supports the Capability</i>
Performer	<i>Organizations that perform the Activities that produce the Performers that realize the Capability Phases</i>
Organizations	

*NOTE 1: "Partial" because any CV should contain the structural description of the Capabilities, in terms of Desired Effects and associated measures, Activities to be performed under conditions – and associated measures.*

# UPDM SAR SvcV-3

<b>SvcV-3a Systems-Services Matrix</b>	Relationships among between systems and services in a given architecture.
<b>SvcV-3b Services-Services Matrix</b>	Relationships among services in a given architecture; can be designed to show relationships of interest, e.g., service-type interfaces, planned vs. existing interfaces, etc.

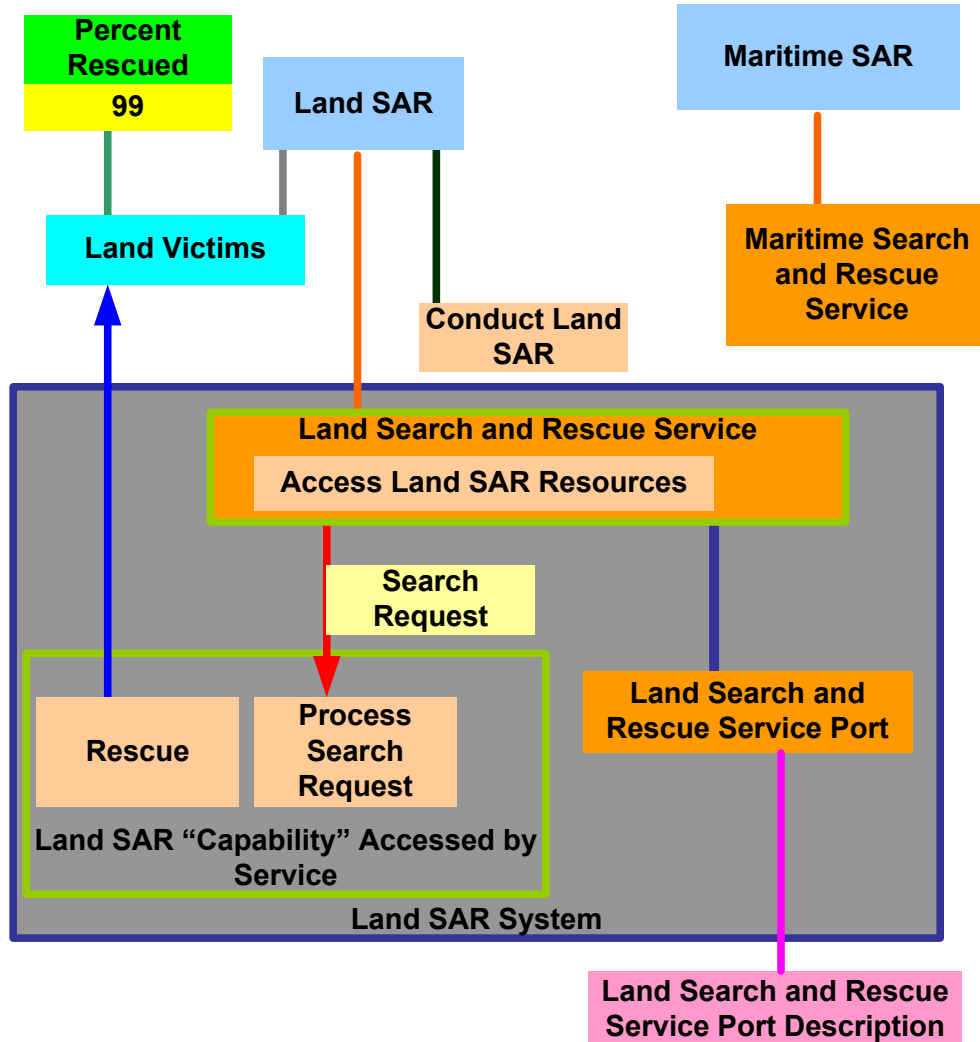


# CV-7 with DM2 Markups

## CV-7: Capability to Services Mapping

Mapping between capabilities and the services that these capabilities enable.

CV-7 [Architectural Description] SAR Services [2]



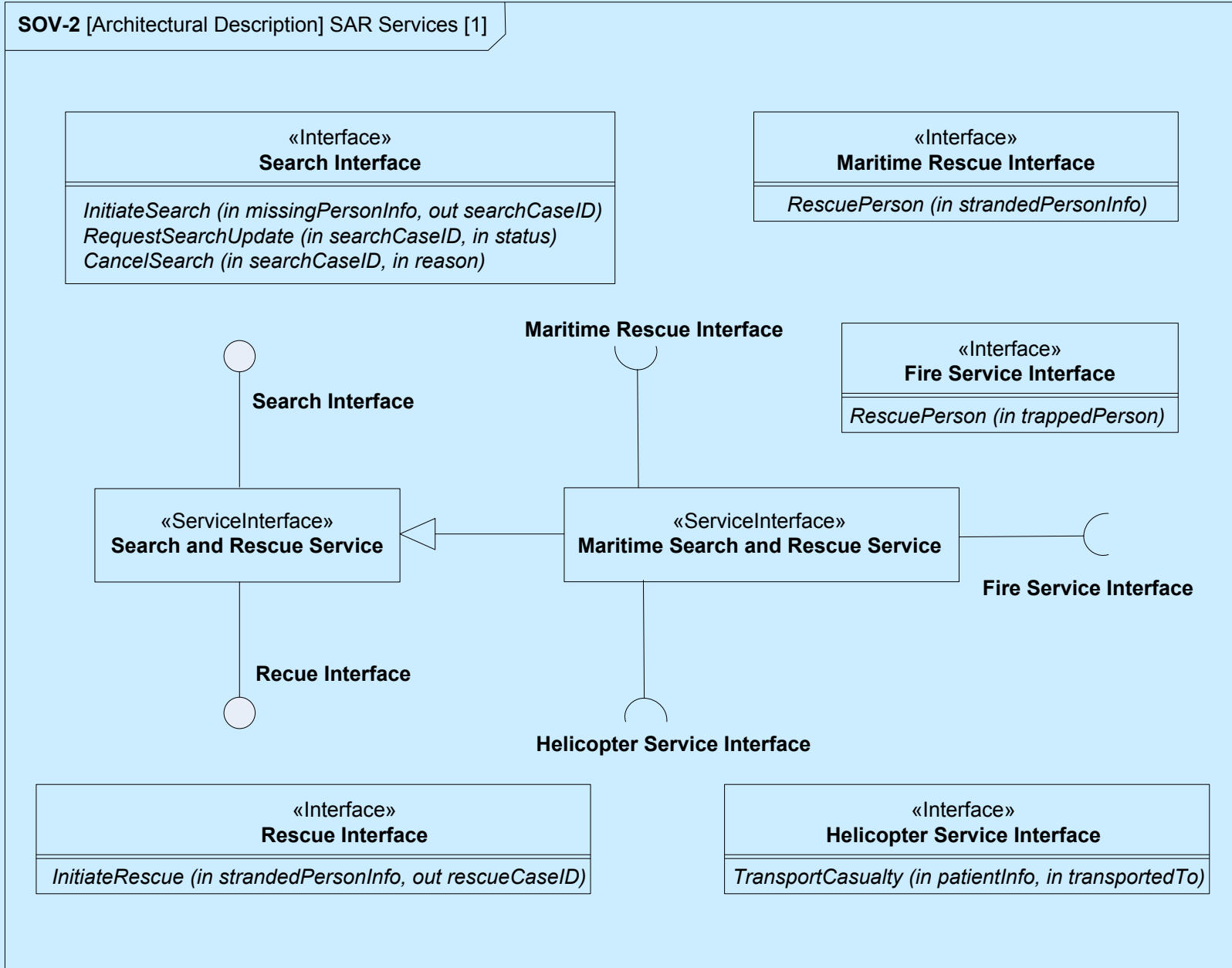
### Legend:

Capability	<i>Desired Effect</i>
Service	<i>Part of</i>
Activity	<i>Activities part of Capability</i>
Resource	<i>Measure of Desired Effect</i>
Service Description	<i>Performer supports or provides Capability</i>
Measure	<i>Describes</i>
Measure Type	<i>Activity Changes Resource</i>
Performer	<i>Resource Flow (ARO)</i>
Information	<i>APBP</i>

# UPDM SAR SvcV-2

## SvcV-2 Services Communications Description

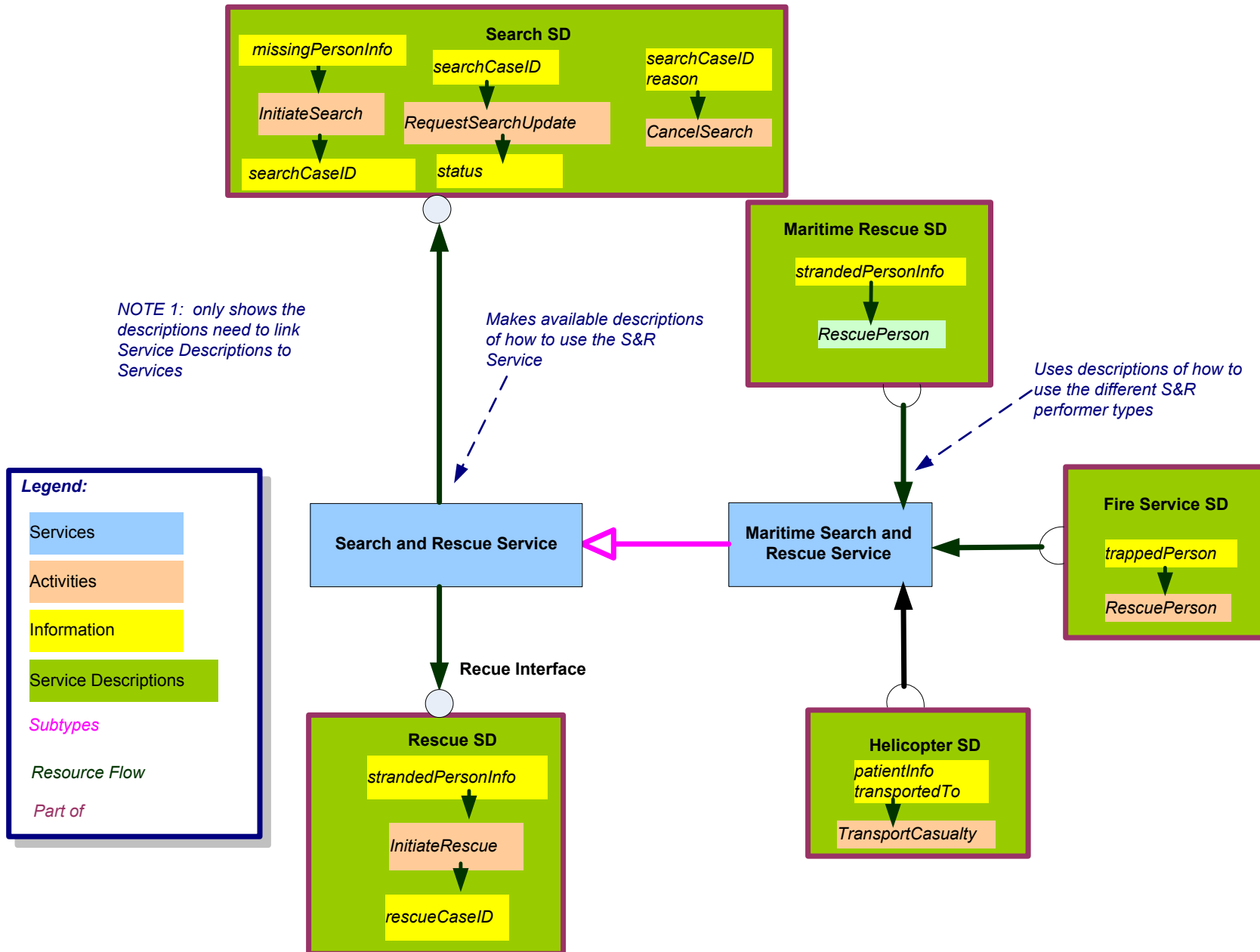
Services and service items and their related communications laydowns



# SvcV-2 with DM2 Markups

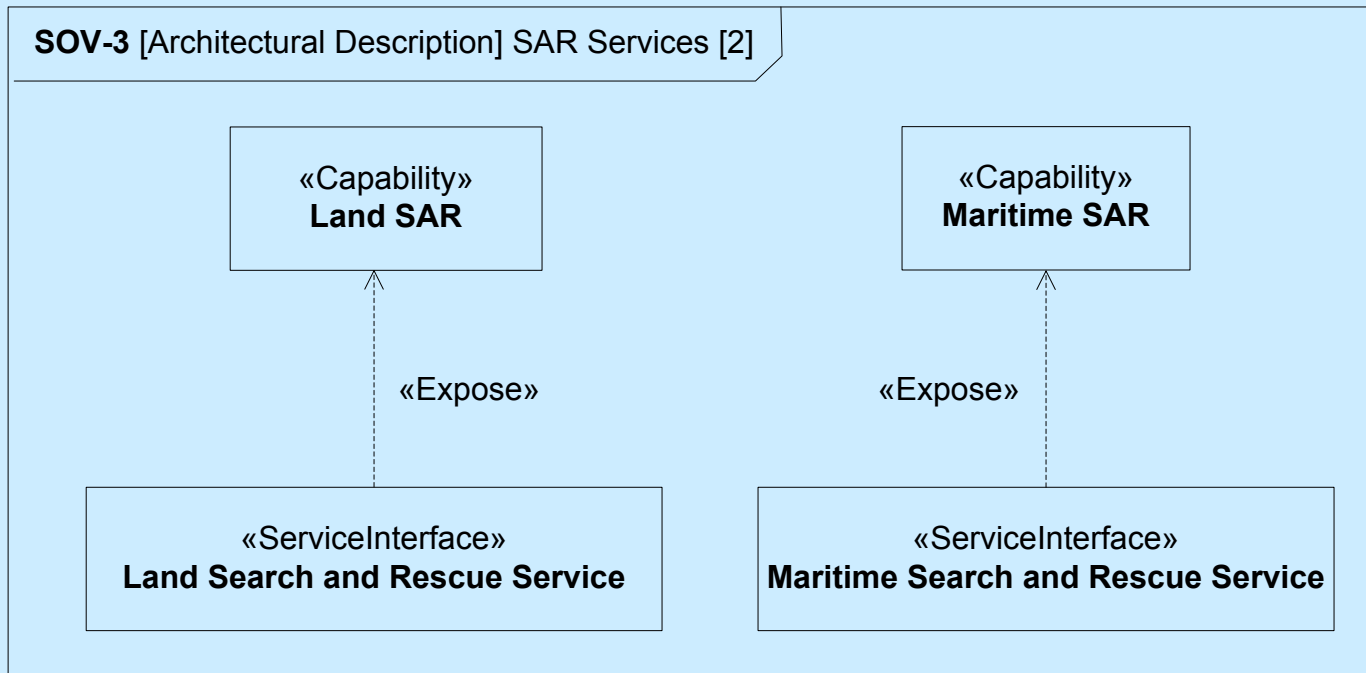
SvcV-2 [Architectural Description] SAR Services [1]

<b>SvcV-2 Services Communications Description</b>	Services and service items and their related communications laydowns
---	--



# UPDM SAR SvcV-3

<b>SvcV-3a Systems-Services Matrix</b>	Relationships among between systems and services in a given architecture.
<b>SvcV-3b Services-Services Matrix</b>	Relationships among services in a given architecture; can be designed to show relationships of interest, e.g., service-type interfaces, planned vs. existing interfaces, etc.



# SvcV-3b Services-Services Matrix with DM2 Markups

<b>SvcV-3a Systems-Services Matrix</b>	Relationships among between systems and services in a given architecture.
<b>SvcV-3b Services-Services Matrix</b>	Relationships among services in a given architecture; can be designed to show relationships of interest, e.g., service-type interfaces, planned vs. existing interfaces, etc.

	Maritime SAR Service	Land SAR Service	Helicopter Service	Maritime Rescue Service	Fire Service
Maritime SAR Service		1	3	3	1
Land SAR Service			3	1	2
Helicopter Service				3	1
Maritime Rescue Service					1
Fire Service					

*Degree of interaction between services:  
 0 - none  
 1 - low  
 2 - moderate  
 3 - high  
 (symmetric matrix)*

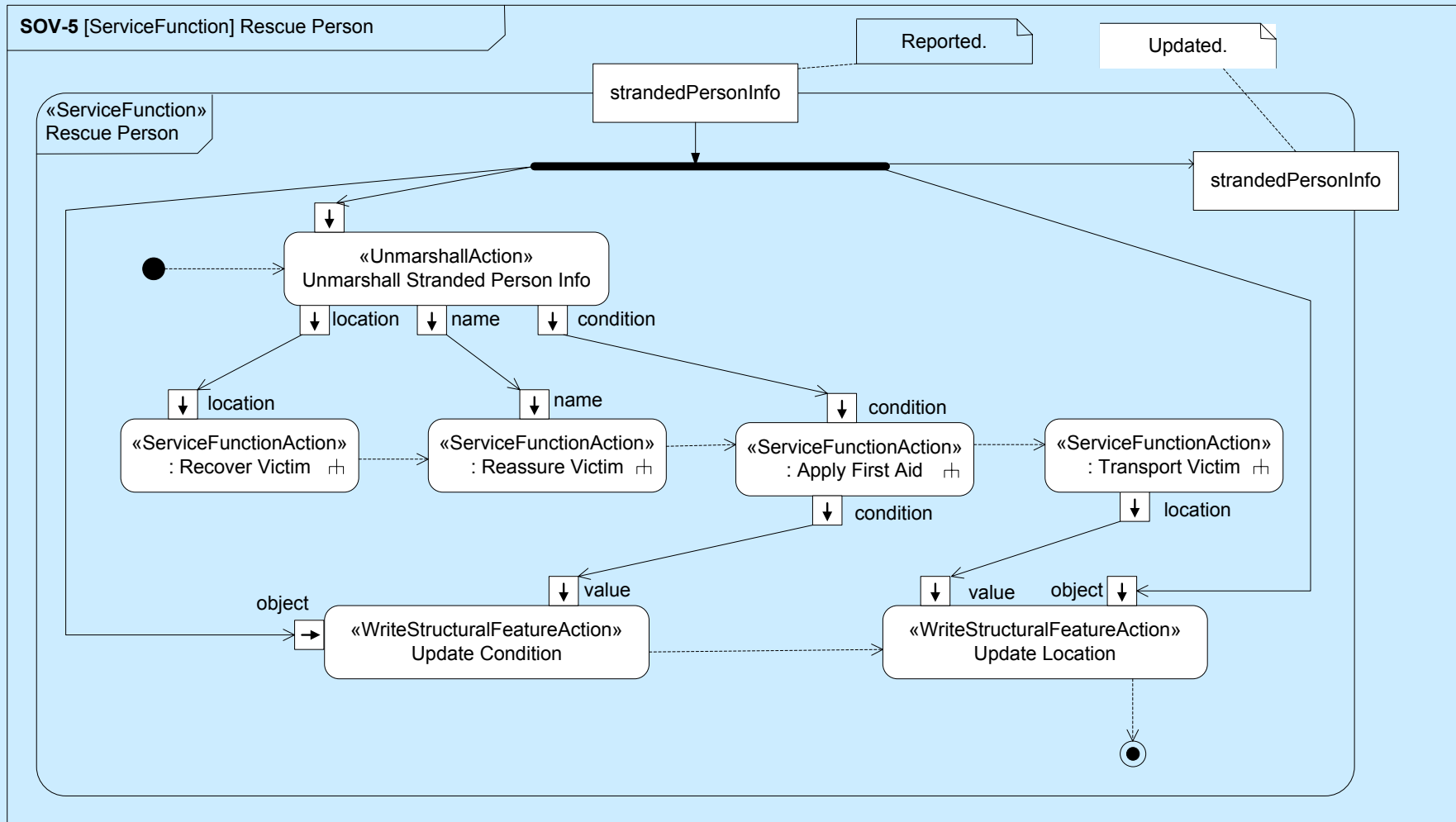
**Legend:**  
Services

Partial list of services

# UPDM SAR SvcV-5

## SvcV-5 Operational Activity to Services Traceability Matrix

Mapping of services (activities) back to operational activities (activities)

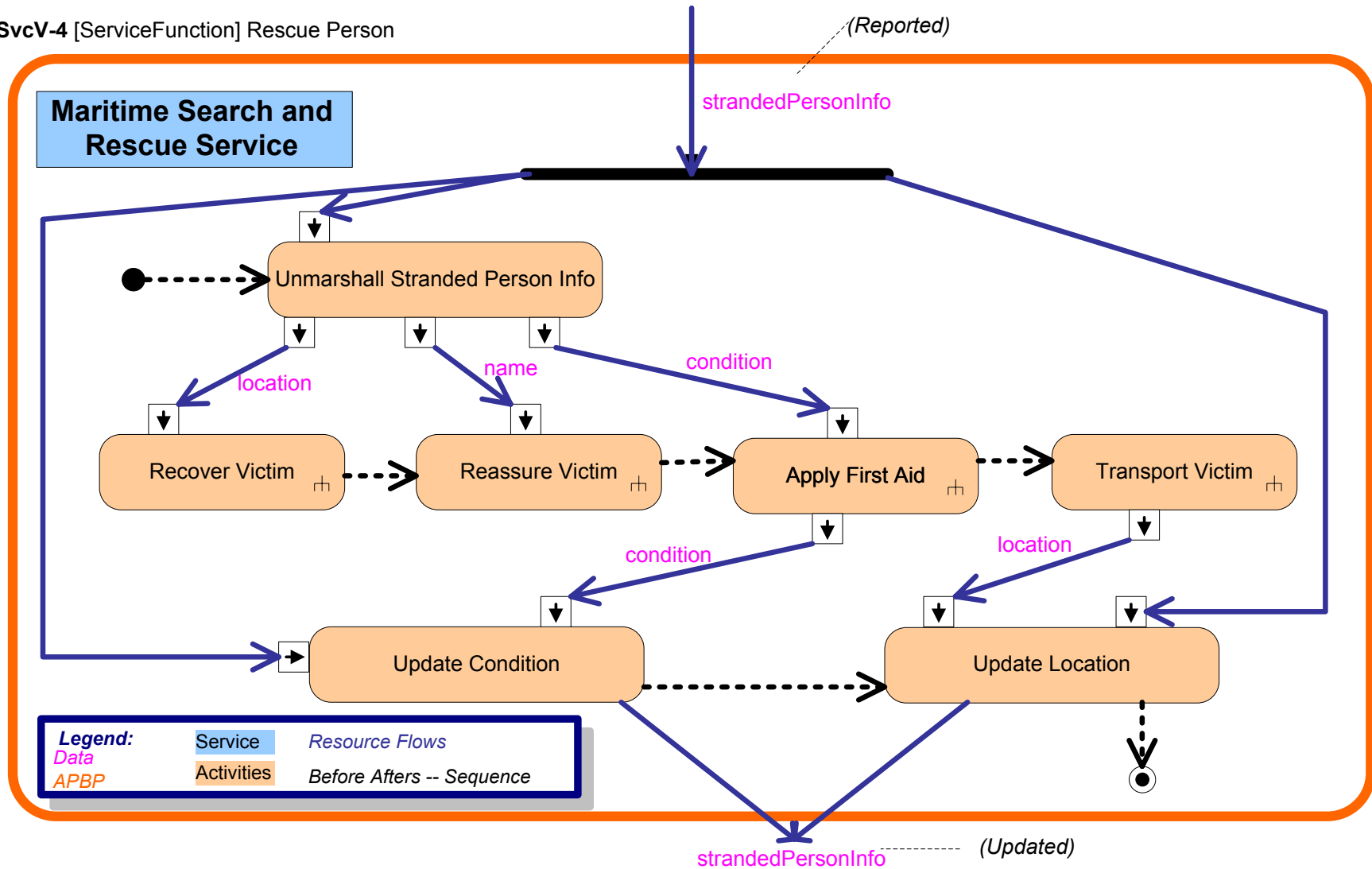




# SvcV-4 Services Functionality Description with DM2 Markups

SvcV-4 Services Functionality Description	Functions performed by services and the service data flows among service functions (activities)
---	---

SvcV-4 [ServiceFunction] Rescue Person



# SvcV-5 with DM2 Markups

<b>SvcV-5 Operational Activity to Services Traceability Matrix</b>	Mapping of services (activities) back to operational activities (activities)
--	--

## Activities Peformed by Services

*NOTE 1: Indentation means whole-part*

<b>Activities</b>	<i>Unmarshall Stranded Person Info</i>	<i>Recover Victim</i>	<i>Reassure Victim</i>	<i>Apply First Aid</i>	<i>Transport Victim</i>	<i>Update Location</i>
Rescue						
Recover Victim	x	x	x		x	x
Receive Distress Signal						
Provide Medical Assistance				x		
Search						
Receive Distress Signal						
Find Victim		x				x
Send Warning Order						
Monitor Health				x		

# UPDM SAR SvcV-4a

## SvcV-4 Services Functionality Description

Functions performed by services and the service data flows among service functions (activities)

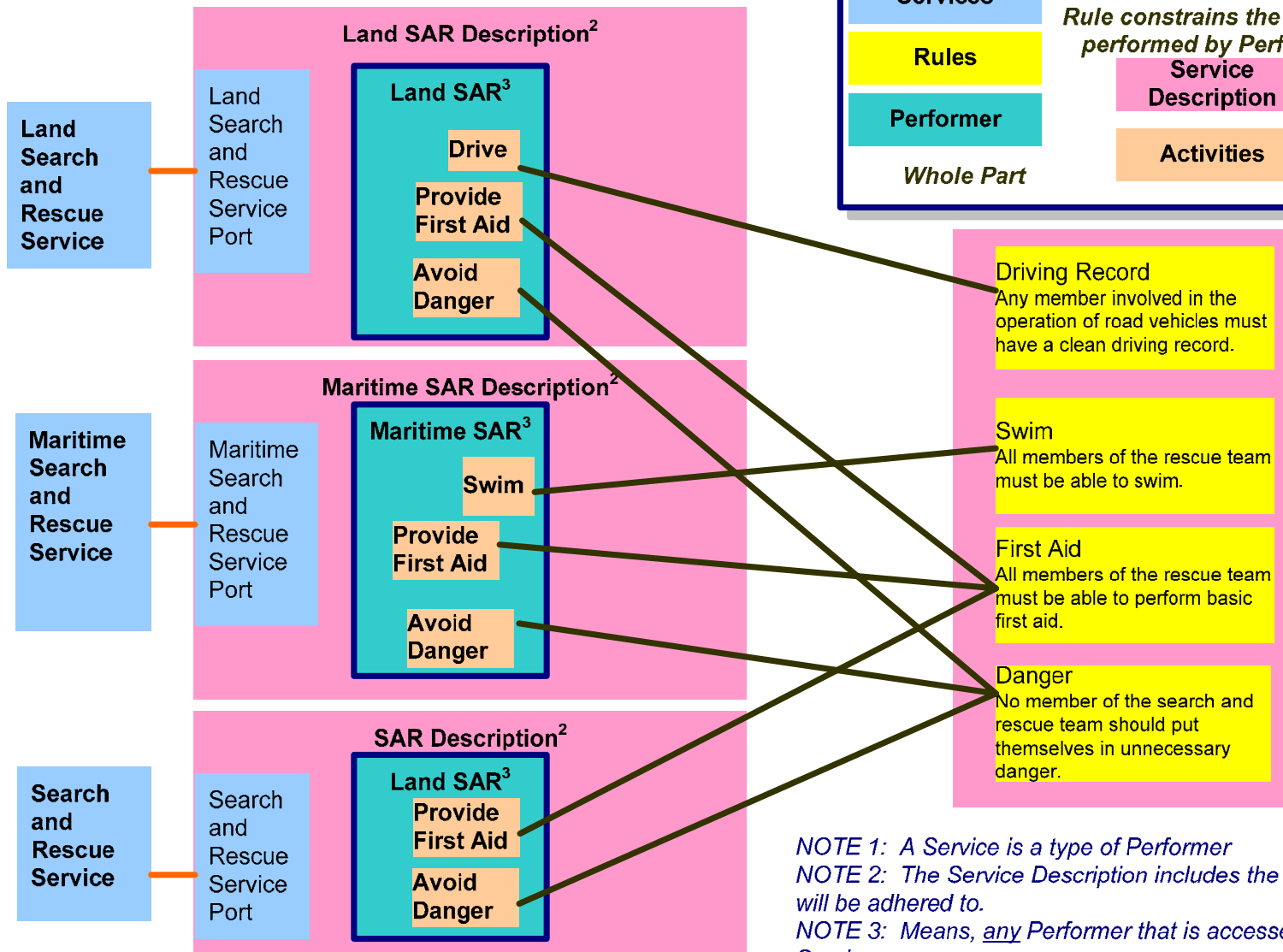
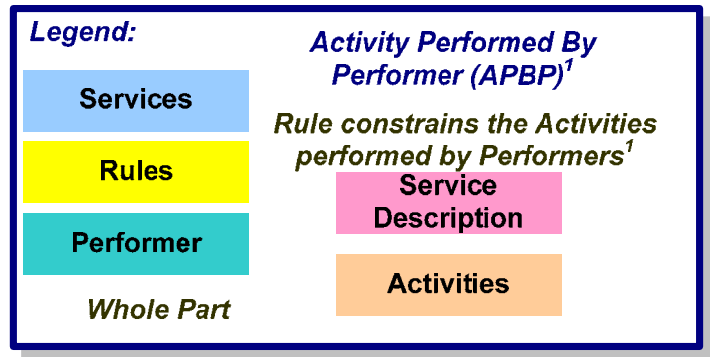
### [Architectural Description] SAR Services [SOV-4a]

Service Interface	Service Policy	
Name	Name	Text
Land Search and Rescue Service	Driving Record	Any member involved in the operation of road vehicles must have a clean driving record.
Maritime Search and Rescue Service	Swim	All members of the rescue team must be able to swim.
Search and Rescue Service	First Aid	All members of the rescue team must be able to perform basic first aid.
	Danger	No member of the search and rescue team should put themselves in unnecessary danger.

# SvcV-10a Services Rules Model with DM2 Markups

**SvcV-10a Services Rules Model**  
 One of three models used to describe service functionality - identifies constraints that are imposed on systems functionality due to some aspect of systems design or implementation

SvcV-10a [Architectural Description] SAR Services

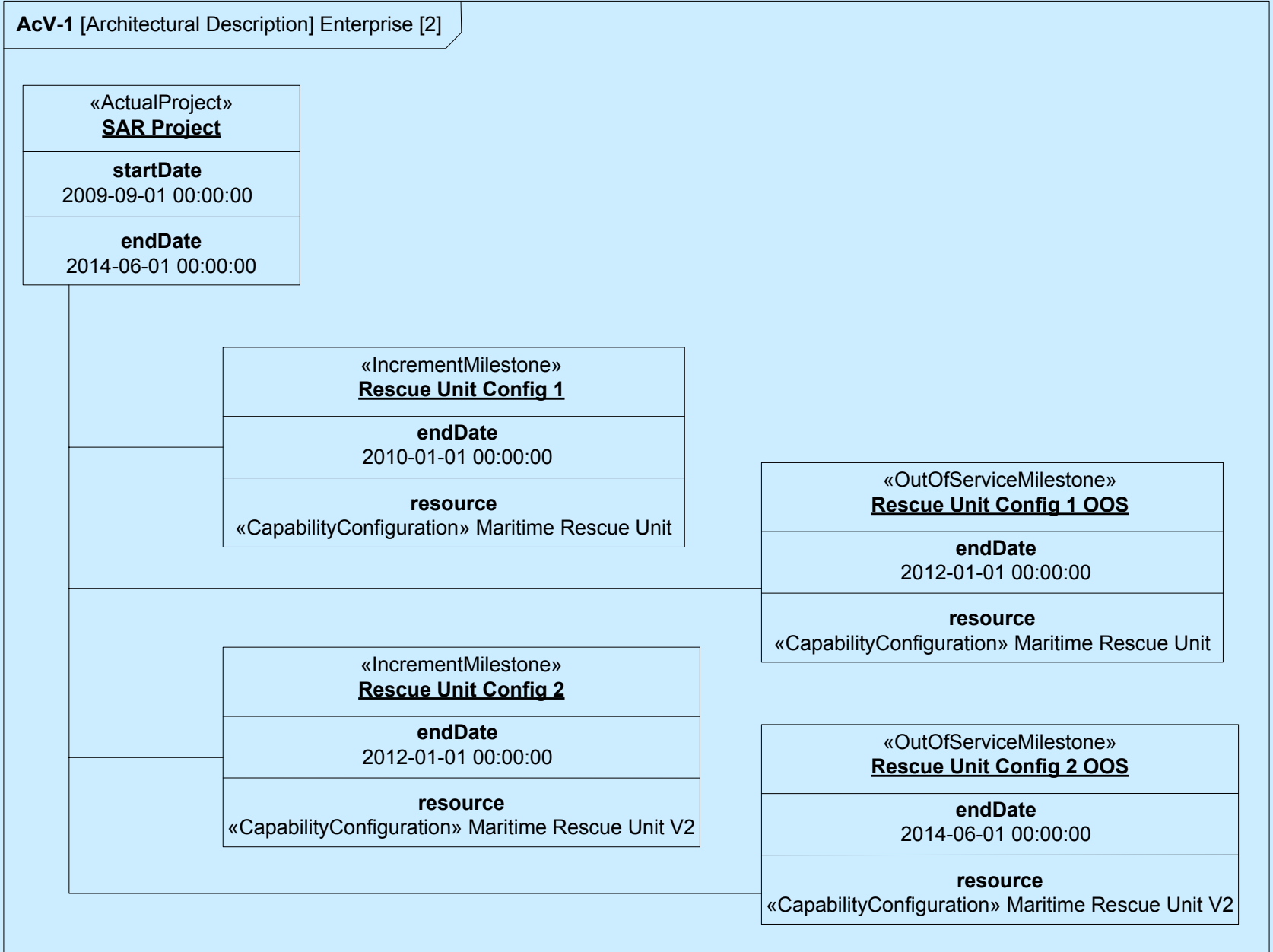


*NOTE 1: A Service is a type of Performer*  
*NOTE 2: The Service Description includes the Rules that will be adhered to.*  
*NOTE 3: Means, any Performer that is accessed by the Service.*

# UPDM SAR PV-1

## PV-1: Project Portfolio Relationships

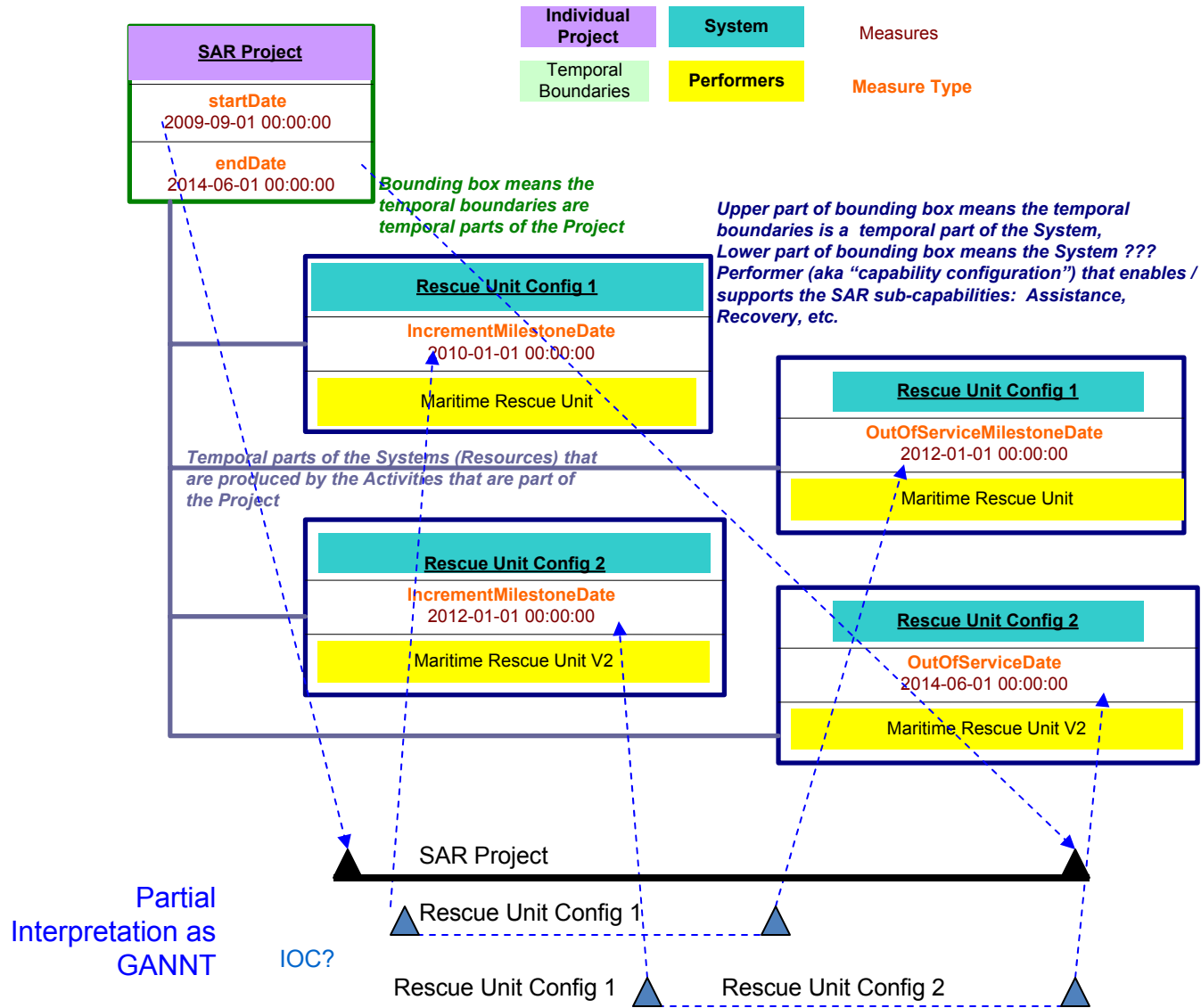
Organizational structures needed to manage a portfolio of projects and shows dependency relationships between the organizations and projects.



# PV-2 with DM2 Markups

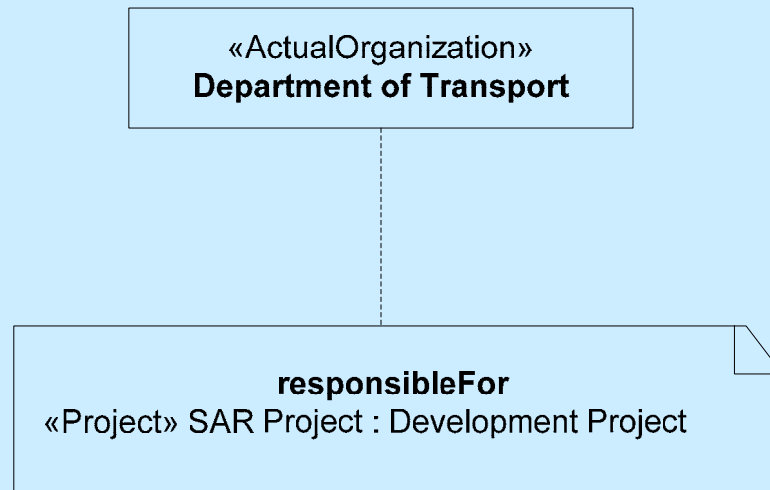
<b>PV-2: Project Timelines</b>	A timeline perspective on programs or projects, with the key milestones and interdependencies
--------------------------------	---

PV-2 [Architectural Description] Enterprise [2]



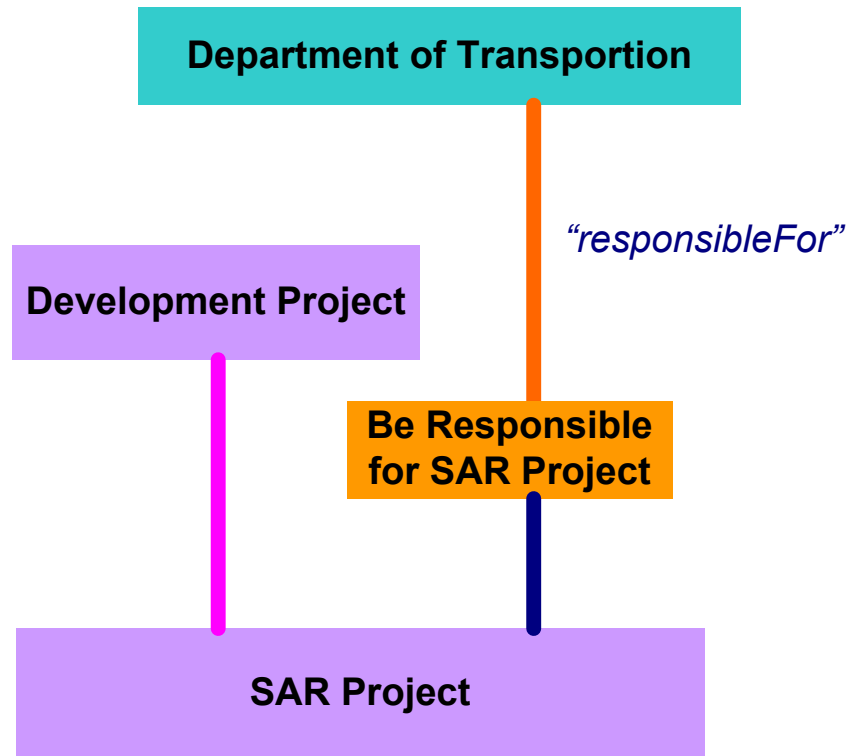
# UPDM SAR PV-1

<b>PV-1: Project Portfolio Relationships</b>	Organizational structures needed to manage a portfolio of projects and shows dependency relationships between the organizations and projects.
--	---



# PV-1 with DM2 Markups

<b>PV-1: Project Portfolio Relationships</b>	Organizational structures needed to manage a portfolio of projects and shows dependency relationships between the organizations and projects.
--	---



**Legend:**

- Activity
- Individual Organization
- Project

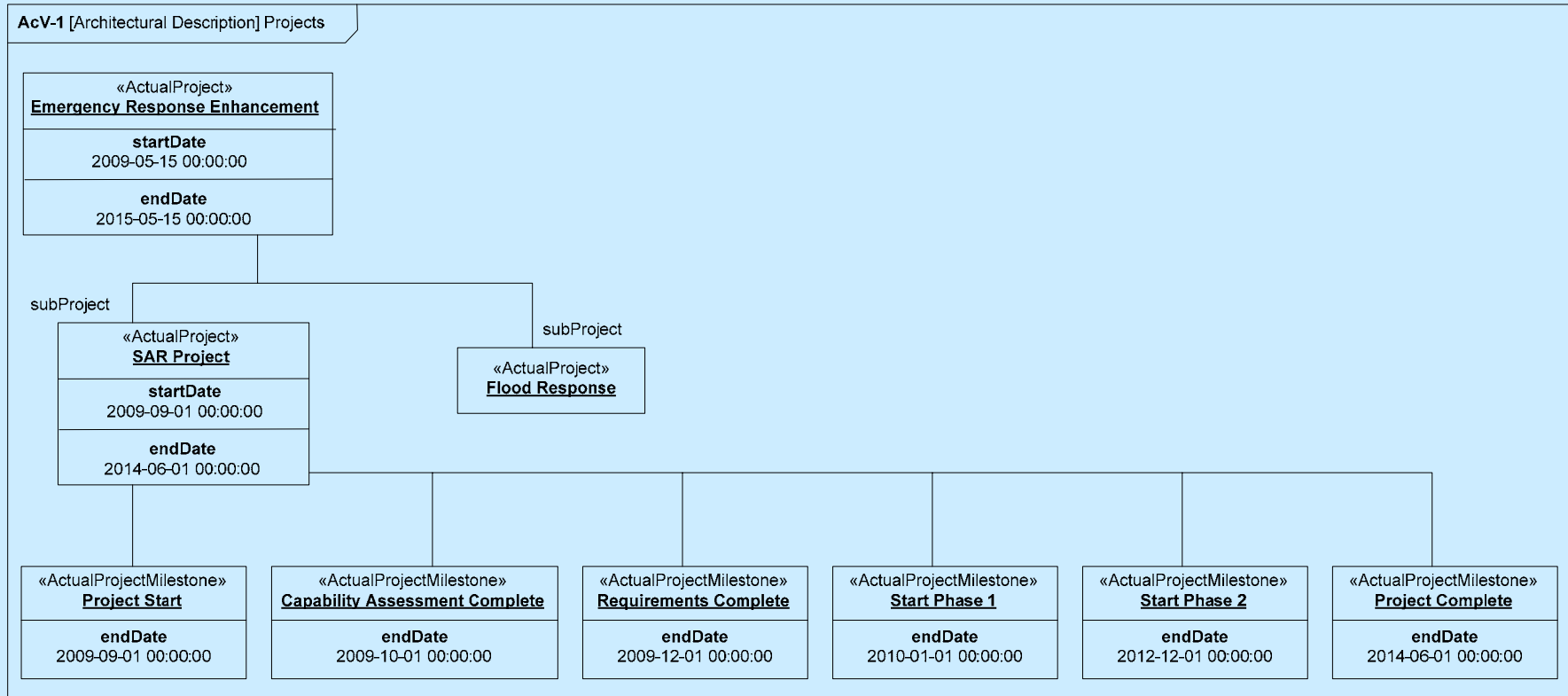
**Subtypes**

- Activity Performed by Performer
- Activity part of Project



# UPDM SAR PV-1

**PV-1: Project Portfolio Relationships**  
Organizational structures needed to manage a portfolio of projects and shows dependency relationships between the organizations and projects.



# FFP PV-2 Fusion with Systems Engineering Plan (SEP) with DM2 Markups

**PV-2: Project Timelines**  
 A timeline perspective on programs or projects, with the key milestones and interdependencies

FFP PV-2 Fusion [Architectural Description] Projects

